

**FREE
TIDE TABLE**



OUTFITTERS INTERNATIONAL

FALL/WINTER SUPPLEMENTAL PRICE LIST

- ⚓ **AUTHORIZED SALES
AND SERVICE**
- ⚓ **OPEN ALL YEAR ROUND**
- ⚓ **MARINA FACILITIES**
- ⚓ **LAUNCH, HAUL & REPAIR**
- ⚓ **SHIP CHANDLERY**
- ⚓ **RENTAL VESSELS**

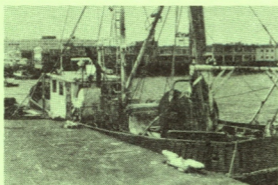
351 WHARF ROAD

YOU'LL "KNOT" FIND BETTER PRICES ELSEWHERE!

Diving book	\$20
Nautical charts	\$150
Flashlight	\$24
Dry cell	\$5
Small air compressor (rental)	\$100
Tube of putty	\$15
C battery	\$1
Net	\$50
Spear gun	\$45
Compass	\$50
Location box	\$1000
Portable electromagnet	\$250
Diving cage (rental)	\$575 ^{\$650}
Shark repellent canister	\$20
Winch	\$300
Anchor	\$50

“The tourist folks come here in June with a clean shirt and a ten-dollar bill ... and they don't change either one the whole summer.”
(From *Captain Haskell's Logbook*)

"U-TRAWL-IT" RENTAL VESSELS



THE NIGHT WIND

44' trawler, sturdy, steady. Capable of handling heavy fishing and dirty weather. Maine built 1970.

Wheelhouse, split Deme winches and rigging new 1981. Loran, radar, recorder. Rigged for snapper/grouper fishing. 1000 gals. fuel, 500 gals. water capacity. 10,000 lbs. fish hold. 453 Detroit Diesel. Pot hauler, hydraulic steering. 2" shaft, Quad nickel propeller, deck hatch, bilge pump, fuel-water strainers, 8" fiberglass muffler. Can be transported on existing triple axle trailer. Now in water and completely seaworthy.

THE MARY MARGARET

55' salvager, ideal for deep-water reclamation jobs. Oak construction. Over-



hauled V8-71 Detroit Diesel, Allison gear. Electronics, rigging, ground tackle. Well outfitted, fast, dependable. Finished fo'c'sle, 20' tower, 16' pulpit. Cuttyhunk built 1975. Sonar 1/2 mile color, color sounder, radar, loran, VHF, CB, hydraulic steering, s/s hydraulic and fuel system, s/s prop and rudder basket. 1400 gals. fuel, 600 gals. water capacity. Comes complete with deep-sea diving gear, including compressor.

HIGH & LOW WATER AT HARDCRABBLE HARBOR

Day of Month	Day of Week	SEPTEMBER						Day of Month	Day of Week	OCTOBER					
		HIGH				LOW				HIGH				LOW	
		a.m.	Ht.	p.m.	Ht.	a.m.	p.m.			a.m.	Ht.	p.m.	Ht.	a.m.	p.m.
1	S	12 08	4.2	5 09	6 11	1	M	12 11	3.1	12 43	3.7	5 34	7 08
2	S	12 35	3.3	1 09	4.0	6 03	7 32	2	T	1 15	2.9	1 48	3.5	6 48	8 18
3	M	1 39	3.0	2 14	3.8	7 11	9 09	3	W	2 21	2.8	2 51	3.4	8 29	9 59
4	T	2 43	2.9	3 15	3.7	8 37	10 23	4	T	3 22	2.9	3 49	3.4	9 54	10 50
5	W	3 44	3.0	4 13	3.8	10 02	11 15	5	F	4 16	3.1	4 39	3.5	10 50	11 25
6	T	4 40	3.1	5 04	3.8	11 01	11 56	6	S	5 03	3.3	5 22	3.6	11 32	11 49
7	F	5 27	3.3	5 51	3.9	11 45	7	S	5 45	3.6	6 04	3.6	12 02
8	S	6 12	3.5	6 33	3.9	12 24	12 23	8	M	6 25	3.8	6 41	3.7	12 12	12 31
9	S	6 52	3.7	7 10	3.9	12 51	12 52	9	T	7 02	3.9	7 20	3.7	12 33	12 56
10	M	7 31	3.8	7 49	3.9	1 13	1 21	10	W	7 39	4.0	7 56	3.6	12 59	1 24
11	T	8 09	3.9	8 27	3.8	1 36	1 51	11	T	8 15	4.0	8 33	3.4	1 26	1 56
12	W	8 47	3.8	9 03	3.6	2 02	2 21	12	F	8 53	3.9	9 11	3.2	1 55	2 28
13	T	9 25	3.8	9 40	3.4	2 29	2 52	13	S	9 32	3.7	9 51	3.0	2 27	3 04
14	F	10 04	3.6	10 20	3.1	3 01	3 29	14	S	10 13	3.6	10 33	2.8	3 02	3 45
15	S	10 43	3.5	11 02	2.9	3 32	4 08	15	M	10 57	3.5	11 27	2.6	3 42	4 28
16	S	11 31	3.4	11 52	2.7	4 11	4 53	16	T	11 55	3.3	4 30	5 23
17	M	12 25	3.3	4 56	5 47	17	W	12 27	2.6	12 58	3.3	5 26	6 26
18	T	12 53	2.6	1 26	3.3	5 47	6 50	18	T	1 37	2.7	2 05	3.4	6 35	7 41
19	W	1 58	2.6	2 30	3.4	6 53	8 04	19	F	2 40	3.0	3 07	3.6	7 56	8 53
20	T	3 04	2.8	3 30	3.7	8 11	9 21	20	S	3 39	3.4	4 05	3.8	9 14	9 55
21	F	4 02	3.2	4 27	4.0	9 28	10 23	21	S	4 34	3.9	4 58	4.0	10 24	10 50
22	S	4 56	3.7	5 22	4.3	10 35	11 17	22	M	5 24	4.3	5 48	4.2	11 24	11 39
23	S	5 47	4.1	6 12	4.5	11 35	23	T	6 14	4.7	6 38	4.3	12 15
24	M	6 36	4.5	7 01	4.6	12 05	12 30	24	W	7 02	4.9	7 26	4.3	12 25	1 05
25	T	7 25	4.8	7 48	4.6	12 52	1 20	25	T	7 50	5.0	8 14	4.1	1 11	1 55
26	W	8 12	4.9	8 36	4.4	1 36	2 09	26	F	8 39	4.9	9 03	3.9	1 55	2 42
27	T	9 02	4.9	9 26	4.1	2 21	3 01	27	S	9 28	4.6	9 53	3.6	2 40	3 31
28	F	9 51	4.7	10 16	3.8	3 06	3 50	28	S	10 20	4.3	10 48	3.2	3 27	4 22
29	S	10 46	4.4	11 12	3.4	3 51	4 44	29	M	11 15	3.9	11 47	3.0	4 12	5 18
30	S	11 42	4.1	4 40	5 47	30	T	12 15	3.5	5 05	6 29
								31	W	12 47	2.8	1 17	3.3	6 13	8 01

Day of Month	Day of Week	NOVEMBER						Day of Month	Day of Week	DECEMBER					
		HIGH				LOW				HIGH				LOW	
		a.m.	Ht.	p.m.	Ht.	a.m.	p.m.			a.m.	Ht.	p.m.	Ht.	a.m.	p.m.
1	T	1 51	2.8	2 18	3.1	7 52	9 15	1	S	2 11	2.8	2 32	2.8	8 11	8 35
2	F	2 51	2.9	3 14	3.1	9 30	10 07	2	S	3 04	3.0	3 22	2.8	9 22	9 18
3	S	3 42	3.1	4 06	3.1	10 23	10 39	3	M	3 52	3.1	4 10	2.9	10 13	9 57
4	S	4 31	3.3	4 48	3.2	11 01	11 01	4	T	4 39	3.4	4 55	3.0	10 50	10 32
5	M	5 14	3.5	5 32	3.3	11 32	11 24	5	W	5 20	3.6	5 39	3.1	11 24	11 09
6	T	5 53	3.7	6 10	3.4	11 59	11 53	6	T	5 01	3.8	6 20	3.1	11 59	11 46
7	W	6 31	3.9	6 49	3.4	12 28	7	F	6 42	3.9	7 02	3.2	12 34
8	T	7 10	4.0	7 29	3.4	12 20	12 59	8	S	7 24	4.0	7 44	3.2	12 23	1 11
9	F	7 48	4.0	8 08	3.3	12 54	1 31	9	S	8 05	4.0	8 28	3.1	1 02	1 51
10	S	8 26	4.0	8 48	3.1	1 26	2 07	10	M	8 47	4.0	9 11	3.1	1 44	2 33
11	S	9 07	3.9	9 30	3.0	2 02	2 45	11	T	9 32	3.9	10 01	3.0	2 28	3 15
12	M	9 50	3.7	10 16	2.8	2 40	3 27	12	W	10 21	3.7	10 51	3.0	3 15	4 01
13	T	10 38	3.6	11 09	2.8	3 25	4 12	13	T	11 15	3.6	11 49	3.1	4 09	4 53
14	W	11 34	3.4	4 14	5 07	14	F	12 11	3.4	5 07	5 47
15	T	12 08	2.8	12 35	3.3	5 13	6 08	15	S	12 48	3.2	1 14	3.3	6 13	6 49
16	F	1 13	2.9	1 38	3.3	6 22	7 16	16	S	1 49	3.4	2 16	3.2	7 28	7 53
17	S	2 16	3.2	2 41	3.4	7 42	8 24	17	M	2 49	3.7	3 15	3.3	8 45	8 56
18	S	3 15	3.6	3 41	3.6	9 01	9 26	18	T	3 46	3.9	4 13	3.3	9 59	9 57
19	M	4 10	4.0	4 34	3.7	10 10	10 23	19	W	4 42	4.2	5 06	3.4	11 01	10 52
20	T	5 03	4.3	5 27	3.8	11 11	11 14	20	T	5 35	4.4	5 59	3.5	11 56	11 45
21	W	5 53	4.6	6 17	3.9	12 04	21	F	6 25	4.5	6 47	3.5	12 44
22	T	6 42	4.8	7 06	3.9	12 02	12 54	22	S	7 13	4.5	7 37	3.5	12 33	1 32
23	F	7 31	4.8	7 54	3.8	12 49	1 40	23	S	8 01	4.4	8 23	3.4	1 19	2 15
24	S	8 19	4.7	8 42	3.6	1 34	2 27	24	M	8 47	4.2	9 10	3.3	2 03	2 55
25	S	9 08	4.4	9 31	3.4	2 18	3 12	25	T	9 34	3.9	9 58	3.2	2 47	3 35
26	M	9 58	4.1	10 22	3.2	3 03	4 01	26	W	10 20	3.6	10 46	3.0	3 27	4 09
27	T	10 49	3.7	11 17	3.0	3 49	4 49	27	T	11 09	3.2	11 37	2.9	4 12	4 46
28	W	11 44	3.3	4 38	5 39	28	F	11 57	3.0	4 54	5 26
29	T	12 13	2.8	12 39	3.1	5 34	6 35	29	S	12 29	2.8	12 48	2.7	5 44	6 08
30	F	1 12	2.8	1 36	2.9	6 45	7 36	30	S	1 23	2.8	1 42	2.6	6 40	6 58
								31	M	2 16	2.8	2 37	2.5	7 44	7 50

Average Rise and Fall 3.5 ft.

When tides exceed average rise in height, expect a corresponding drop in low tide.