

AMSTRAD



PCW9512+ PERSONAL COMPUTER WORD PROCESSOR SERVICE MANUAL

CONTENTS

	Page
Technical Specification	2
Safety Tests	2
Alignment Instructions	3
Monitor Exploded View & Parts List	4 & 5
Printer Exploded View & Parts List	6
Keyboard P.C.B., Exploded View & Parts List	7
Paper Feed Exploded View & Parts List	8
Tractor Exploded View & Parts List	9
Paper End Sensor Exploded View & Parts List	10
Carrier Frame Exploded View & Parts List	11
Print Head & Hammer Drive Exploded View & Parts List	12
Ribbon Drive Exploded View & Parts List	13
Wheel Set Release Exploded View & Parts List	14
Ribbon Cassette Base Exploded View & Parts List	14
Chassis & Carrier Drive Exploded View & Parts List	15
Main P.C.B. Top View	16
Main P.C.B. Bottom View	17
Monitor/CRT P.C.B.	18 & 19
Printer/Cover/Open P.C.B. Top & Bottom Views	20
Printer Control Schematic Diagram	21
Keyboard Schematic Diagram	22 & 23
Printer Motor Driver Schematic Diagram	24
CPU Schematic Diagram	25
CPU-A Schematic Diagram	26
CPU-B Schematic Diagram	27
CPU-C Schematic Diagram	28 & 29
Monitor 1 Schematic Diagram	30 & 31
Monitor 2 Schematic Diagram	32 & 33
Electrical Parts List	34 & 35

TECHNICAL SPECIFICATION

PCW9512+

Memory	: 512k RAM
Disk Drive	: 1 x 3.5" 720k (facility to add second drive)
Display	: Paper white 12" monochrome screen, with 90 columns x 32 lines displayed
Keyboard	: Full size, PC style with 82 keys and adjustable legs
Supplied Software	: LocoScript 2 word processing software, Locomail, Locospell, CP/M Plus, (Mallard BASIC, GSX graphics enhancement, Dr Logo educational training language*)
External Connectors	: Parallel Printer Port

DAISYWHEEL PRINTER

Speed	: Bi-directional printing at 20cps
Paper Handling	: Automatic paper loading by bail bar action
Type Sizes	: Daisywheels available in 10, 12, and 15cpi
Carriage Width	: 15"
Accessories supplied as standard	: 30 sheet Automatic Sheet Feeder, removable tractor feed

CANON BJ-10e BUBBLE JET PRINTER

Print Speed (Draft & High Quality modes)	: 83 cps (10cpi), 100 cps (12 cpi), 142 cps (17 cpi)
Resolution (H x V)	: 360 x 360 (High Quality Mode), 180 x 360 (Draft Mode)
Paper Weight	: 52-90 g.s.m. (Auto Sheet Feeder), 52-105 g.s.m. (Manual Feed)
Internal Typefaces and Pitch	: Courier, Prestige Elite at 10, 12 or 17 cpi and Proportional Spacing
Print Head	: 64 nozzle Bubble Jet Head
Emulation	: IBM Proprinter X24E
Interface	: Parallel (Centronics) type
Dimensions	: 310mm (W) x 216mm (D) x 48mm (H)
Weight	: Main unit: 1.8Kg (approx) AC Power Adaptor: 0.6Kg (approx)
Power Source	: A/C Adaptor (standard) AC 240V 50Hz 25W, Nicad battery pack (optional)

SAFETY TEST

Please note: When any work is carried out on a recorder, the following safety tests must be carried out to ensure continued electrical safety.

1). Flash Test

Test at 4kV between the live and neutral of the mains lead joined together and ALL accessible metal points on the exterior of the recorder.

2). Insulation Resistance Test

Test between the live and neutral of the mains lead joined together and ALL accessible metal points on the exterior of the set to show a resistance of at least 4Mohm

In keeping with our policy of continually improving our service, and the technical quality of our products, we reserve the right to change component types, manufacturers, sources of supply or technical specification at any time.

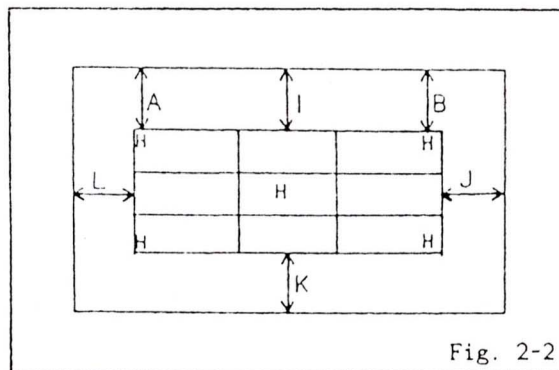
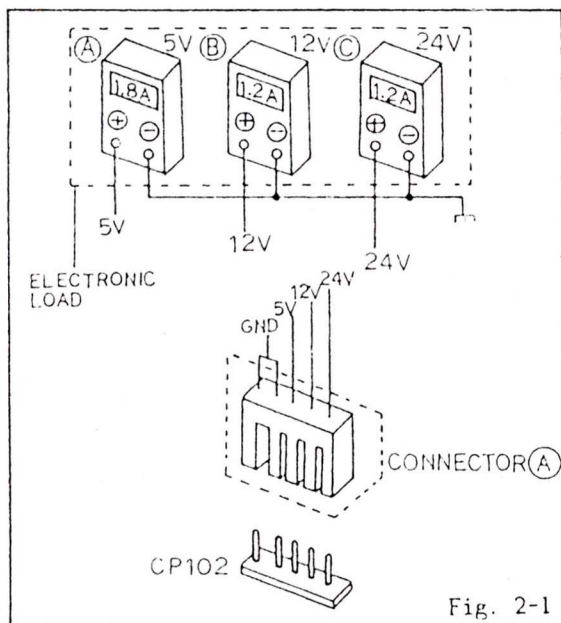
AMSTRAD PLC
BRENTWOOD HOUSE, 169 KINGS ROAD, BRENTWOOD, ESSEX CM14 4EF.

ALIGNMENT CHART FOR THE MONITOR

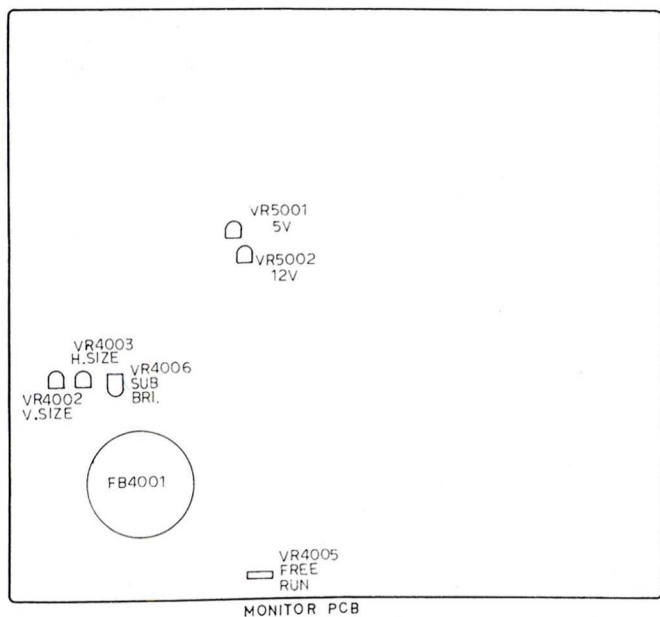
Equipment required: Digital Voltmeter; Oscilloscope; Frequency Counter; Test Pattern Generator; RP6 or Pattern Disc.

ALIGNMENT INSTRUCTIONS

STEP	FUNCTION	SIGNAL IN	SIGNAL OUT	METHOD	REMARKS
1.	D.C. 24V Adjustment.	Connector 'A'.	D.V.M.	Check if $24V \pm 1.2V$.	Disconnect CP102 to perform the test. Replace after tests. Ref. Fig. 2-1.
2.	D.C. 12V Adjustment.	Connector 'A'.	D.V.M.	Adjust VR5002 to read $12V \pm 0.01V$. Set VR401 to max.	Disconnect CP102 to perform the test. Replace after tests. Ref. Fig. 2-1.
3.	D.C. 5V Adjustment.	Connector 'A'.	D.V.M.	Adjust VR5001 to read $5V \pm 0.05V$. Set VR401 to max.	Disconnect CP102 to perform the test. Replace after tests. Ref. Fig. 2-1.
4.	V. Size Adjustment.	RP6 or Pattern Disc.	Monitor Screen.	Adjust VR4002 for full size. $I = K = 10 \pm 3mm$. Check if all 'H' are the same, if not adjust VR4003.	Adjust Brightness control as required. Ref. Fig. 2-2.
5.	Linearity Adjustment.	RP6 or Pattern Disc.	Monitor Screen.	Adjust DY to get Up/Down space from the centre of the screen in the test pattern. $A-B \leq 3mm$. $J-L \leq 3mm$.	Adjust Brightness control as required. Ref. Fig. 2-2.
6.	H. Hold Adjustment.	Free run no input.	Pin 5/CP401.	Adjust VR4005 to read frequency 15625kHz.	
7.	Sub. Brightness Adjustment.	RP6 or Pattern Disc.	Monitor Screen.	Set Brightness, Contrast controls to min. position. Adjust VR4006 for dim pattern.	Try till satisfied.
8.	Hammer Current Adjustment.	RP6. Select Printer Test.	Monitor Screen.	Turn Pot. VR701 until pulse waveform is 2.4V.	

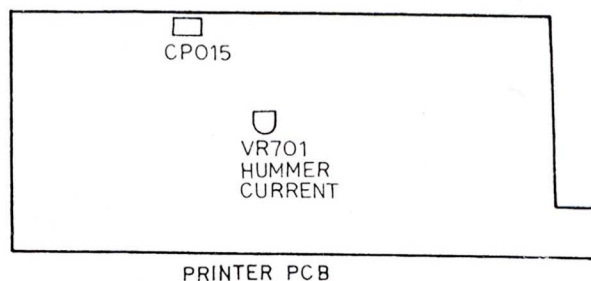


MAJOR COMPONENTS LOCATION GUIDE

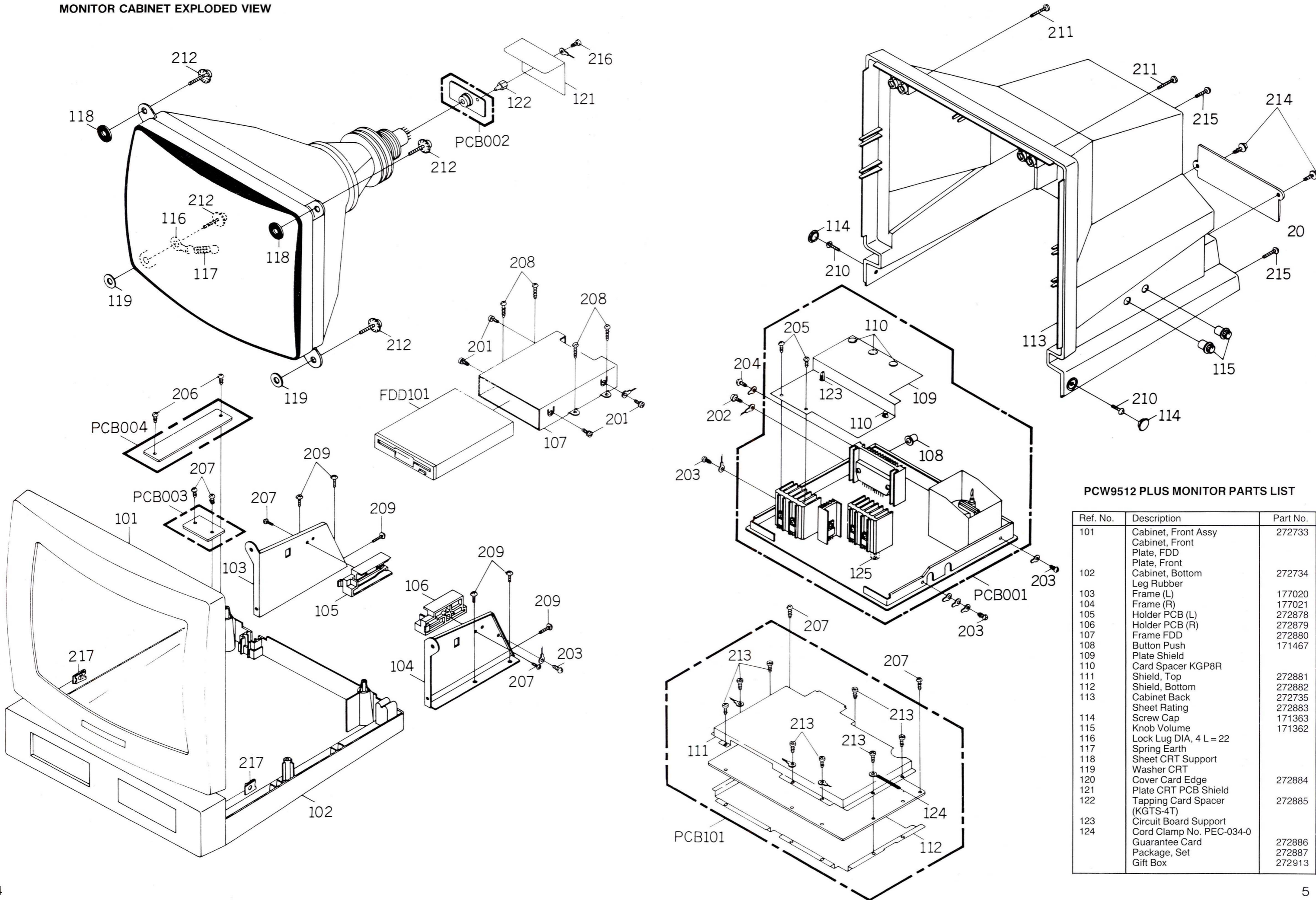


HUMMER CURRENT

1. Connect the oscilloscope to TP015.
2. Work the printer, then adjust VR701 until the plus waveform is 2.4V.



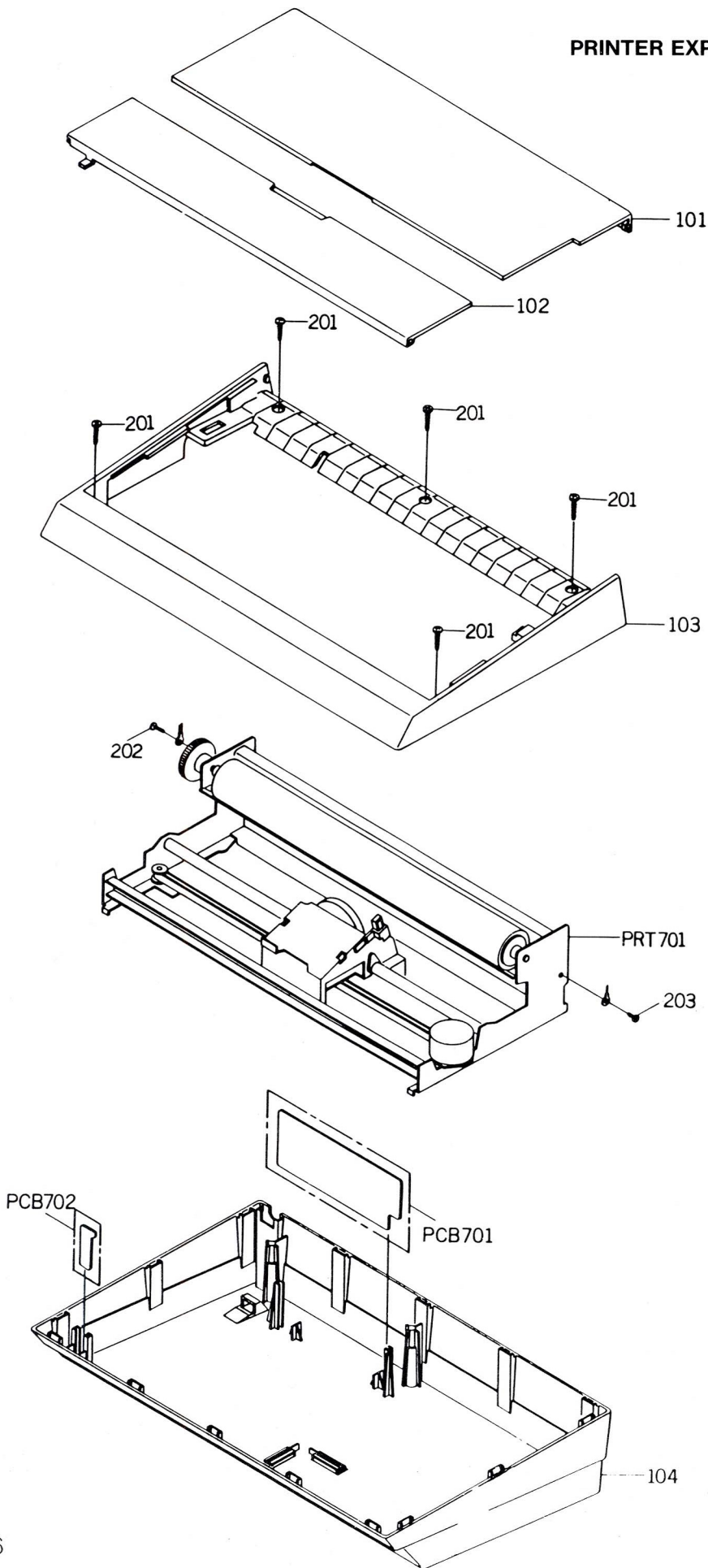
MONITOR CABINET EXPLODED VIEW



PCW9512 PLUS MONITOR PARTS LIST

Ref. No.	Description	Part No.
101	Cabinet, Front Assy	272733
	Cabinet, Front	
	Plate, FDD	
	Plate, Front	
102	Cabinet, Bottom	272734
	Leg Rubber	
103	Frame (L)	177020
104	Frame (R)	177021
105	Holder PCB (L)	272878
106	Holder PCB (R)	272879
107	Frame FDD	272880
108	Button Push	171467
109	Plate Shield	
110	Card Spacer KGP8R	
111	Shield, Top	272881
112	Shield, Bottom	272882
113	Cabinet Back	272735
	Sheet Rating	272883
114	Screw Cap	171363
115	Knob Volume	171362
116	Lock Lug DIA, 4 L = 22	
117	Spring Earth	
118	Sheet CRT Support	
119	Washer CRT	
120	Cover Card Edge	272884
121	Plate CRT PCB Shield	
122	Tapping Card Spacer (KGTS-4T)	272885
123	Circuit Board Support	
124	Cord Clamp No. PEC-034-0	
	Guarantee Card	272886
	Package, Set	272887
	Gift Box	272913

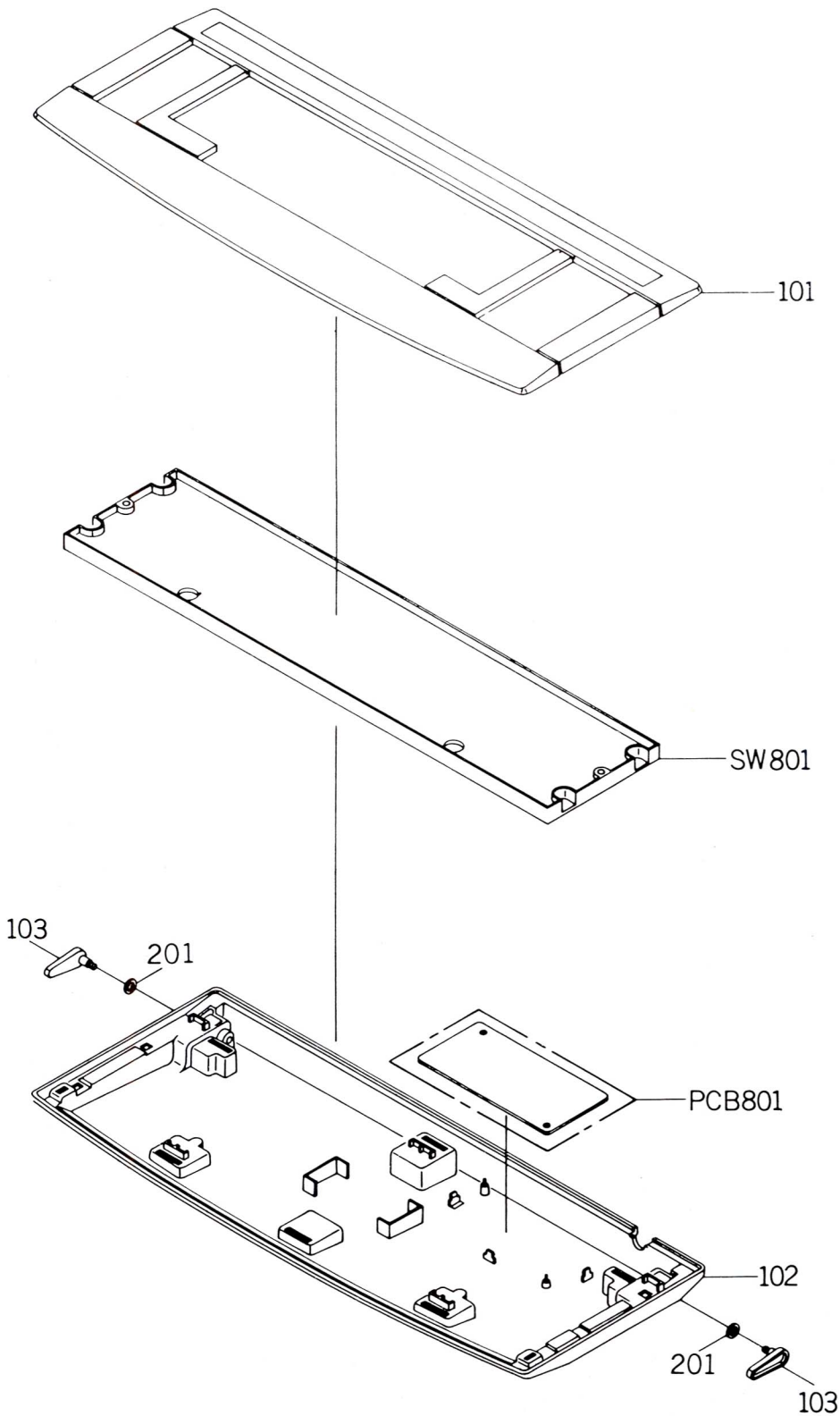
PRINTER EXPLODED VIEW



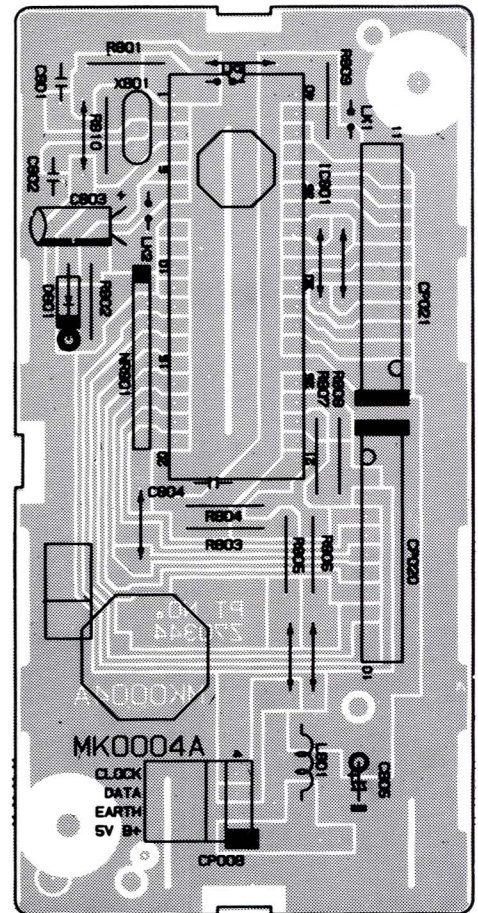
Ref.	Description	Part No.
Printer Parts List		
101	Sheet Tray	177030
102	Dust Cover	177029
	Sheet Double Face	
	Sheet Warning	
103	Sheet Warning (Printer)	272888
	Cabinet, Top	272730
	Plate Brand	272881
	Sheet Caution	
104	Cabinet, Bottom	272729
	Leg Rubber	
	Sheet Rating	272890
	Guarantee Card	
	Package, Set	272891
	Gift Box	
	Auto Sheet Feeder	272895
	Cover Plate ASF	272896

Ref.	Description	Part No.
Keyboard Parts List		
101	Cabinet, Top	272731
	Plate Brand	272893
102	Cabinet, Bottom	272732
	Leg Rubber	
	Sheet Rating	272892
103	Stand, Keyboard	171358
	Package Set	272894
	Complete Keyboard Assy	272727

KEYBOARD EXPLODED VIEW



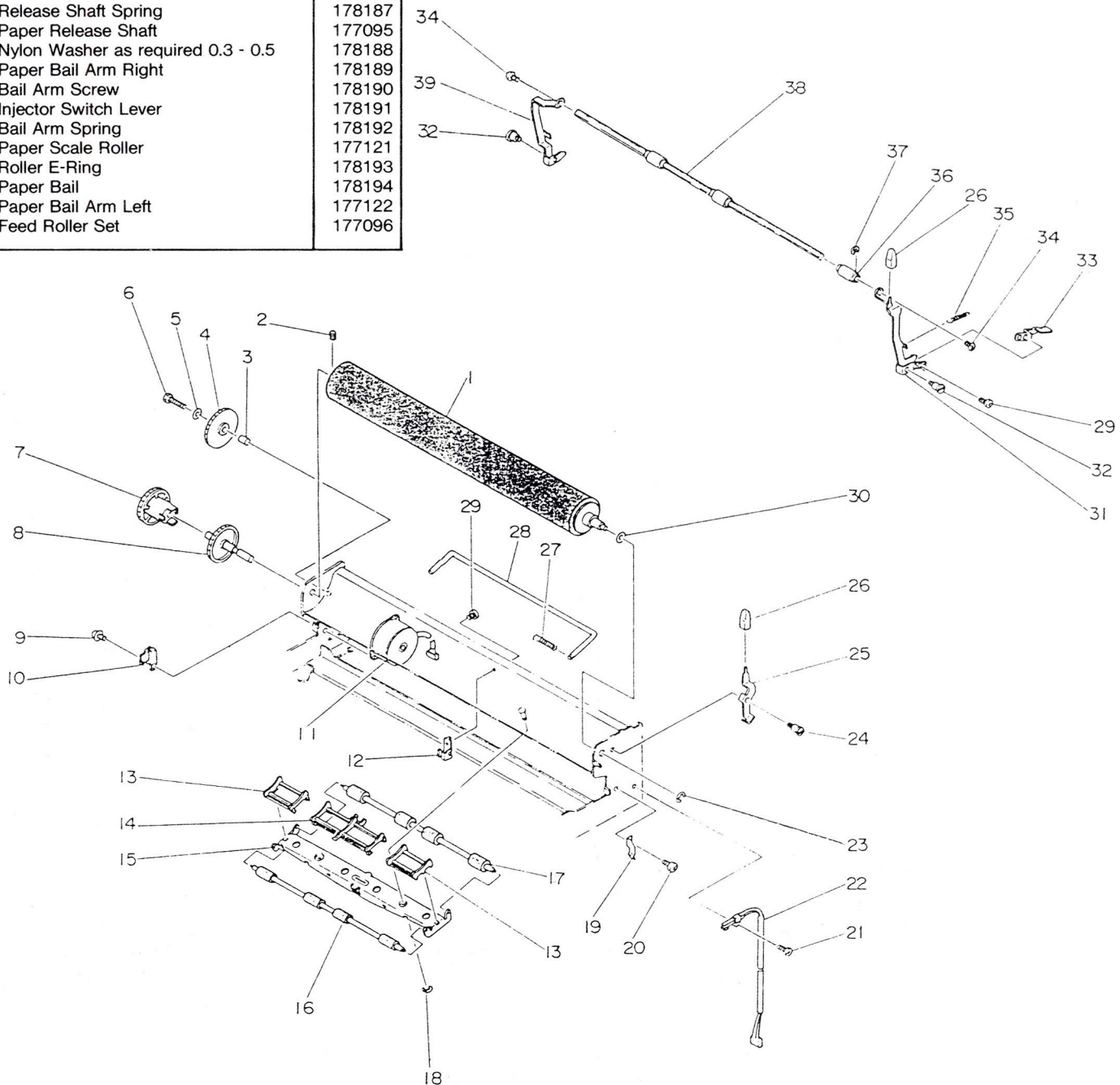
KEYBOARD P.C.B.



PAPER FEED PARTS LIST

Ref.	Description	Part No.
1	Platen	177088
2	Set Screw	177047
3	Idle Gear Collar	178177
4	Index Idle Gear	178178
5	Washer	178179
6	Hexagon Head Screw	
7	Platen Knob	177089
8	Platen Gear	177090
9	Flange Screw	177091
10	Wheel Reset Stopper	178180
11	Index Motor Assembly	177092
12	Release Shaft Bracket	178181
13	Paper Guide A	177117
14	Paper Guide B	177118
15	Feed Roller Holder	178182
16	Feed Roller Front	177119
17	Feed Roller Rear	177120
18	E Ring E-2.5	
19	Bail Arm Latch Spring	177093
20, 29	Screw M3 x 4	
21, 34	Screw M2.6 x 5	
22	Paper Injector Switch Assembly	177094
23	E Ring E-5	178183
24	Paper Release Screw	178184
25	Paper Release Lever	178185
26	Lever Cap	178186
27	Release Shaft Spring	178187
28	Paper Release Shaft	177095
30	Nylon Washer as required 0.3 - 0.5	178188
31	Paper Bail Arm Right	178189
32	Bail Arm Screw	178190
33	Injector Switch Lever	178191
35	Bail Arm Spring	178192
36	Paper Scale Roller	177121
37	Roller E-Ring	178193
38	Paper Bail	178194
39	Paper Bail Arm Left	177122
40	Feed Roller Set	177096

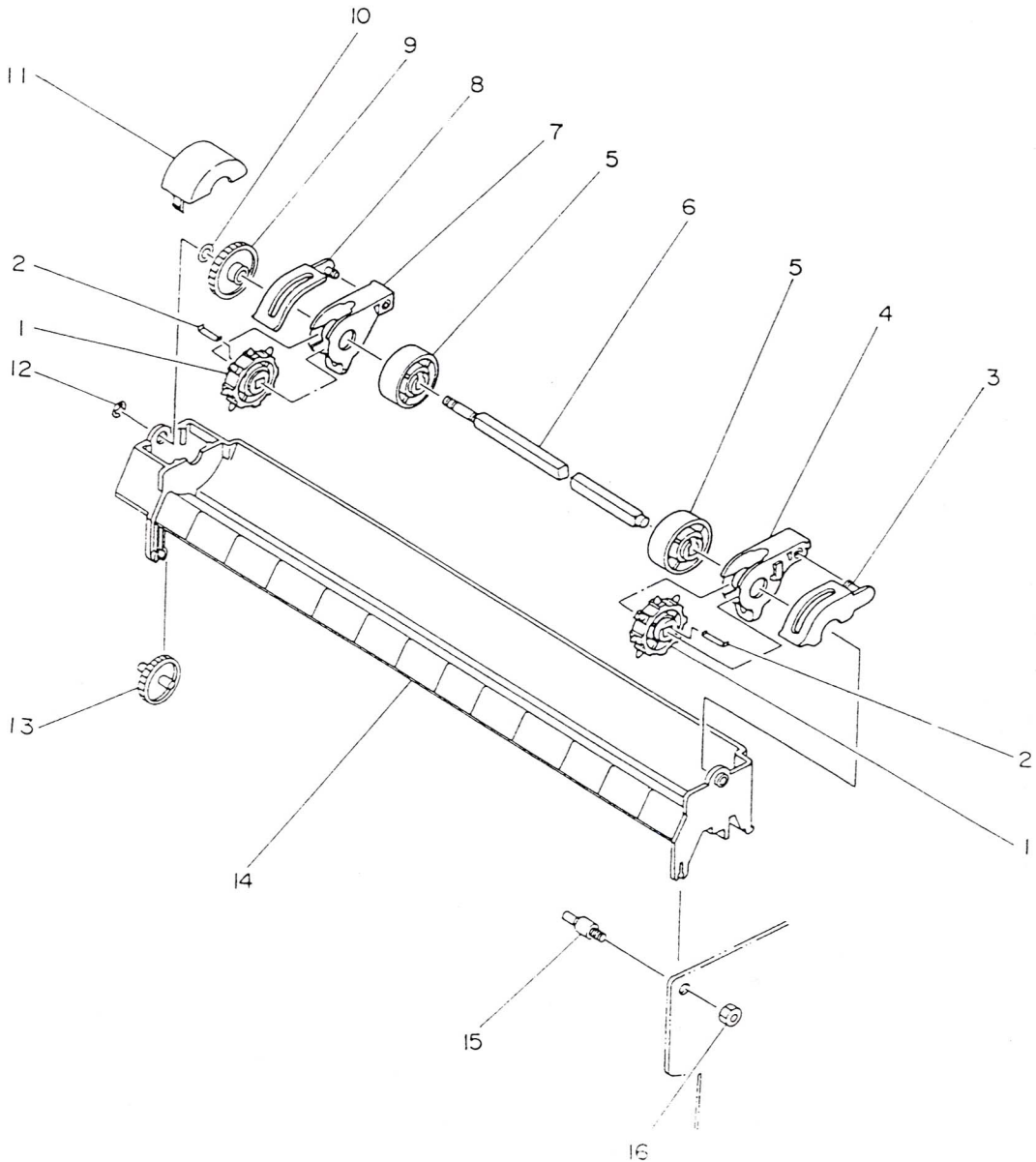
PAPER FEED EXPLODED VIEW



TRACTOR PARTS LIST

Ref.	Description	Part No.
1	Tractor Roller	177123
2	Tractor Spring	
3	Tractor Cover Right	
4	Tractor Frame Right	
5	Guide Roller	177124
6	Tractor Shaft	
7	Tractor Frame Left	
8	Tractor Cover Left	
9	Tractor Gear	
10	Nylon Washer 4.2 x 8 x 0.3	
11	Tractor Gear Cover	
12	E Ring E-3	
13	Tractor Idle Gear	
14	Tractor Housing	
15	Tractor Pin	
16	Nut	
17	Tractor Assembly Complete	177018

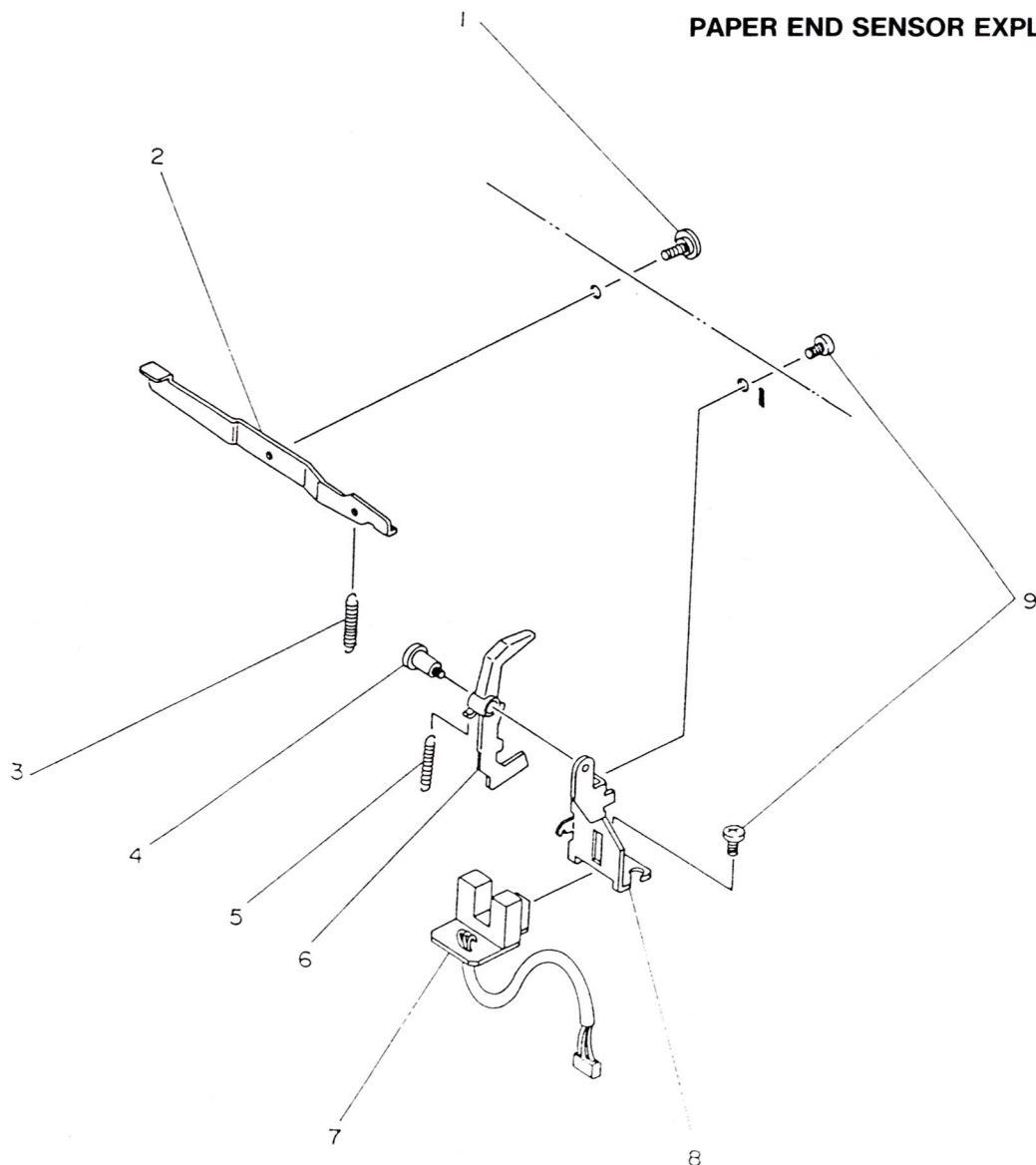
TRACTOR EXPLODED VIEW



PAPER END SENSOR PARTS LIST

Ref.	Description	Part No.
1	Screw	178195
2	Sensor Release Arm	178196
3	Spring	178197
4	Set Lever Screw	178198
5	Spring	178199
6	Paper End Lever	178200
7	Paper End Sensor PCB Assembly	177125
8	Paper End Bracket	178201
9	Screw	178201
10	Paper End Sensor Assembly	177097

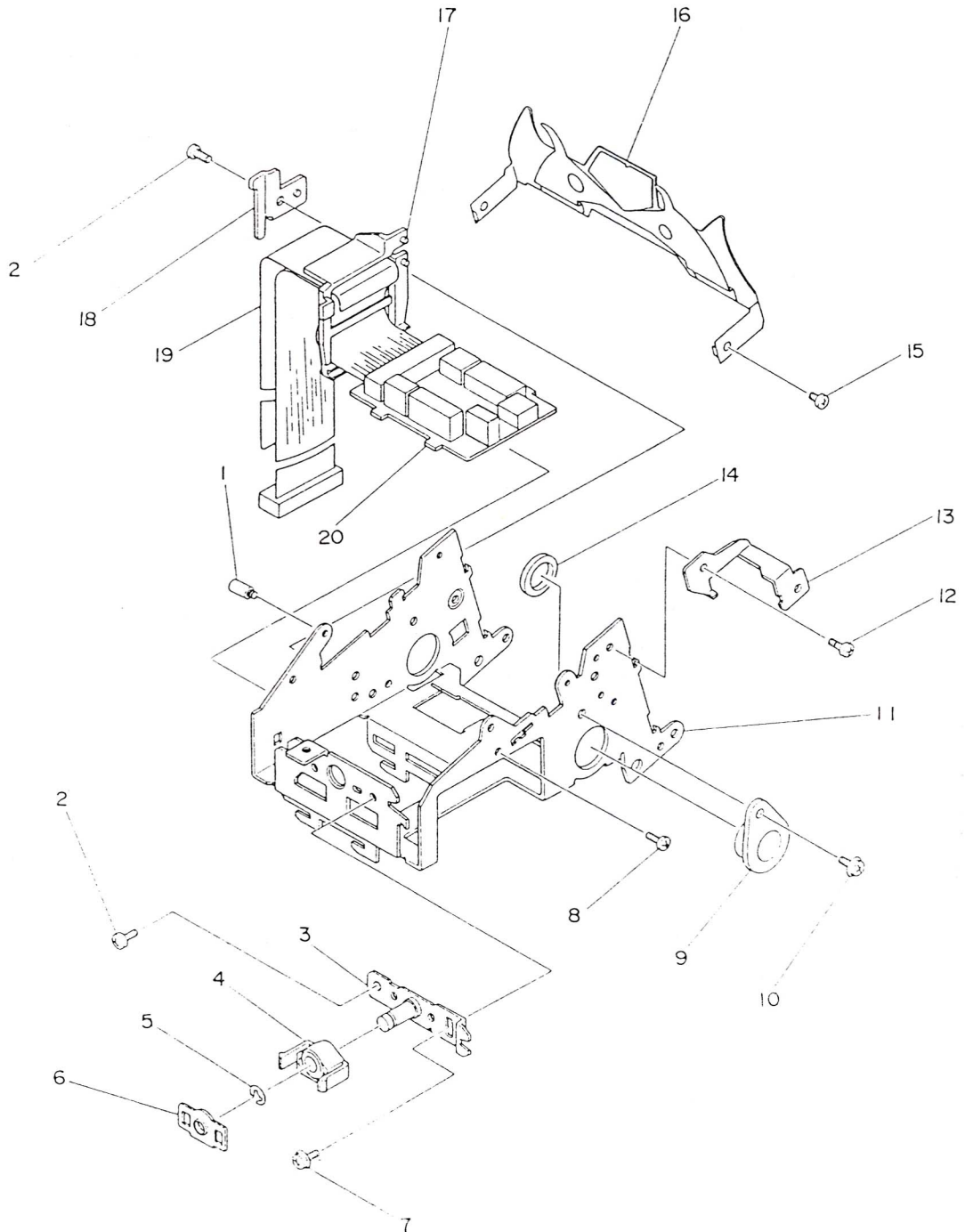
PAPER END SENSOR EXPLODED VIEW



CARRIER FRAME PARTS LIST

Ref.	Description	Part No.
1	Cassette Base Screw A	178202
2	Screw M3.5 x 6	
3	Carrier Guide Base	178203
4	Carrier Guide	178204
5	E Ring E-4	178205
6	Carrier Guide Bracket	178206
7	Flange Screw M3.5 x 4	
8	Screw M3 x 4	
9	Carrier Metal	178207
10	Flange Screw M3 x 4	
11	Carrier Frame	178208
12	Screw M3 x 4	
13	Locator Bracket	178209
14	Felt Ring	178210
15	Screw M3 x 3	
16	Line Locator	178211
17	Cable Holder	178212
18	Carrier Lock Bracket	178213
19	Carrier Earth Blade	178214
20	Carrier PCB Assembly	177126
21	Carrier Frame Assembly	177098
22	Carrier Guide Base Complete	177099

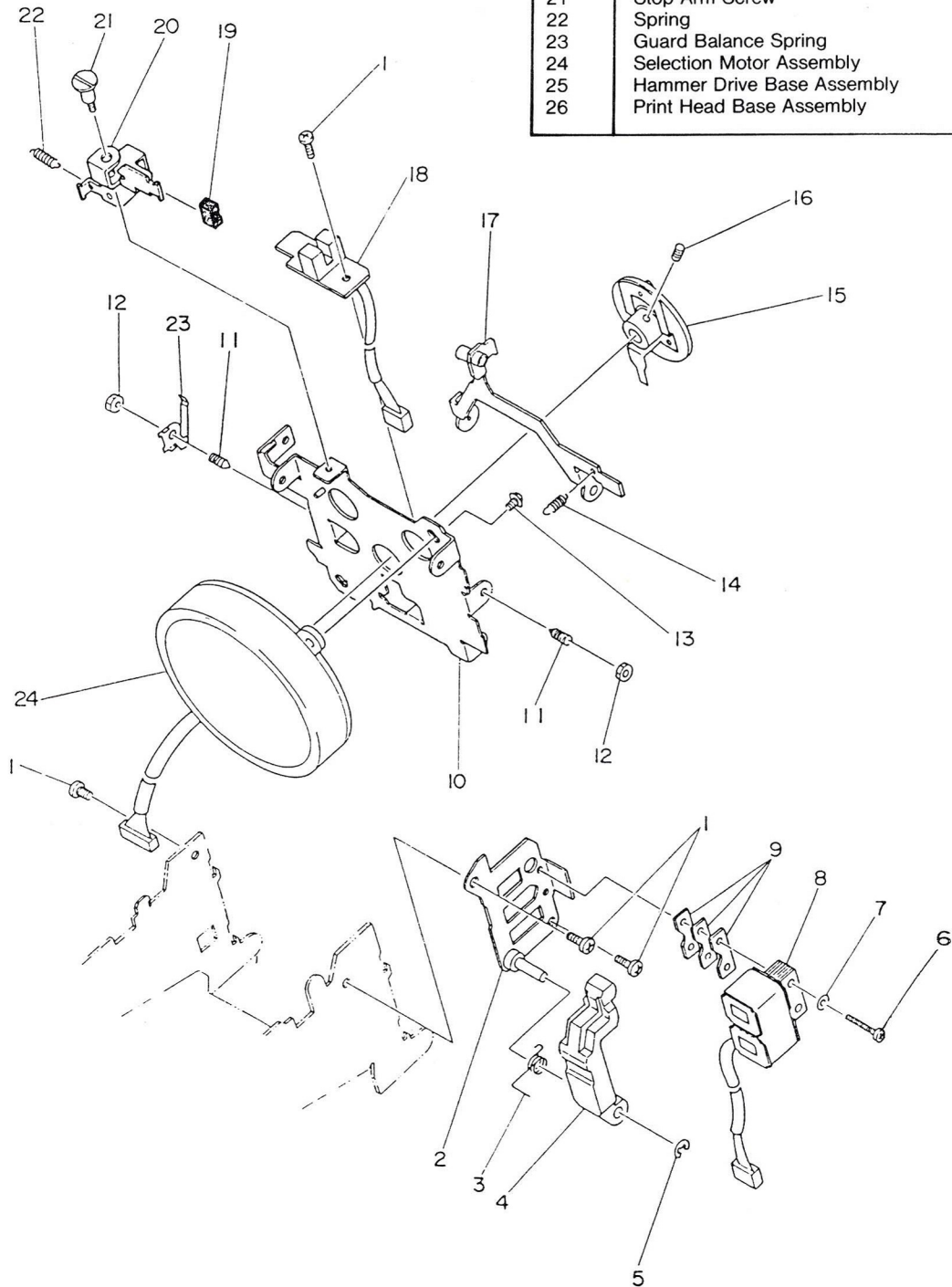
CARRIER FRAME EXPLODED VIEW



PRINT HEAD & HAMMER DRIVE PARTS LIST

Ref.	Description	Part No.
1	Screw M3 x 4	
2	Hammer Drive Base	178215
3	Spring	178216
4	Armature	177166
5	E Ring E-2.5	
6	Screw	
7	Spring Washer	178217
8	Hammer Magnet Assembly	177100
9	Hammer Magnet Spacer	178218
10	Print Head Base	178219
11	Hammer Screw	178220
12	Nut M3.5	
13	Hexagon Head Screw M3 x 6	
14	Spring	178121
15	Wheel Holder Complete	178122
16	Set Screw M4 x 4	178123
17	Hammer	178124
18	Selection Sensor Assembly	177101
19	Hammer Stop Rubber	178125
20	Hammer Stop Arm	178126
21	Stop Arm Screw	178127
22	Spring	178128
23	Guard Balance Spring	178129
24	Selection Motor Assembly	177102
25	Hammer Drive Base Assembly	177103
26	Print Head Base Assembly	177104

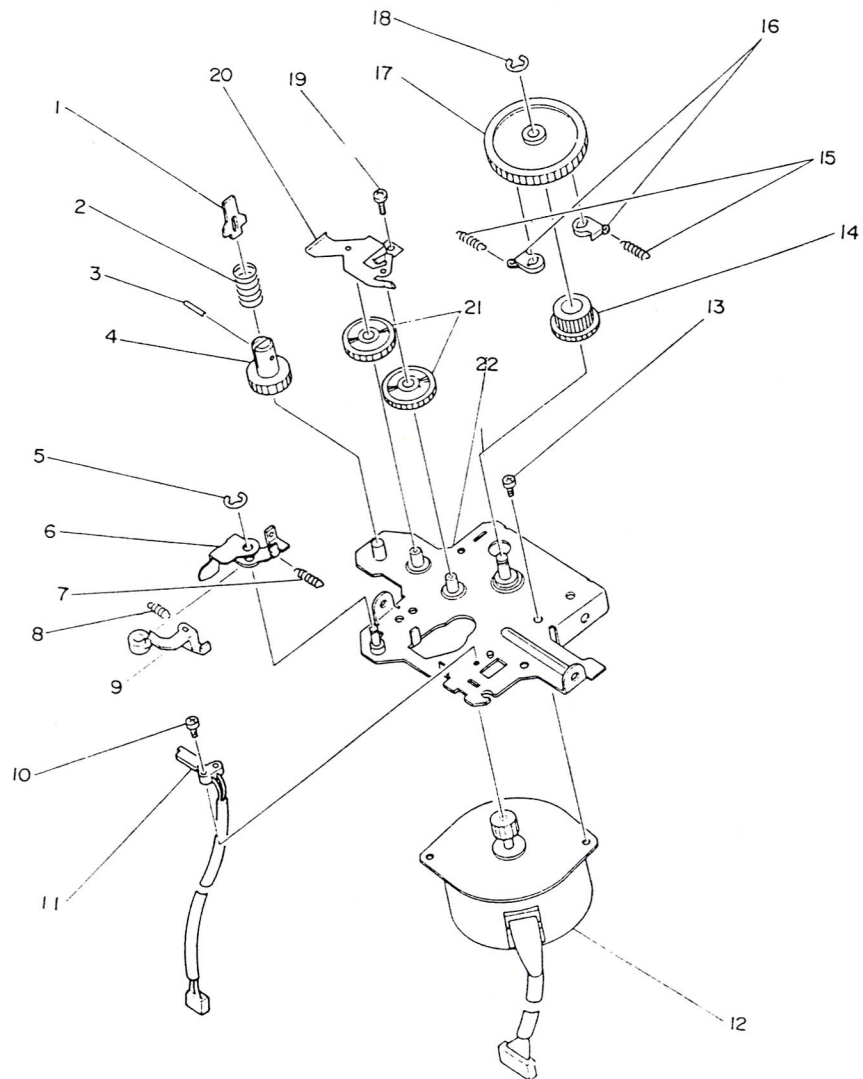
PRINT HEAD & HAMMER DRIVE EXPLODED VIEW



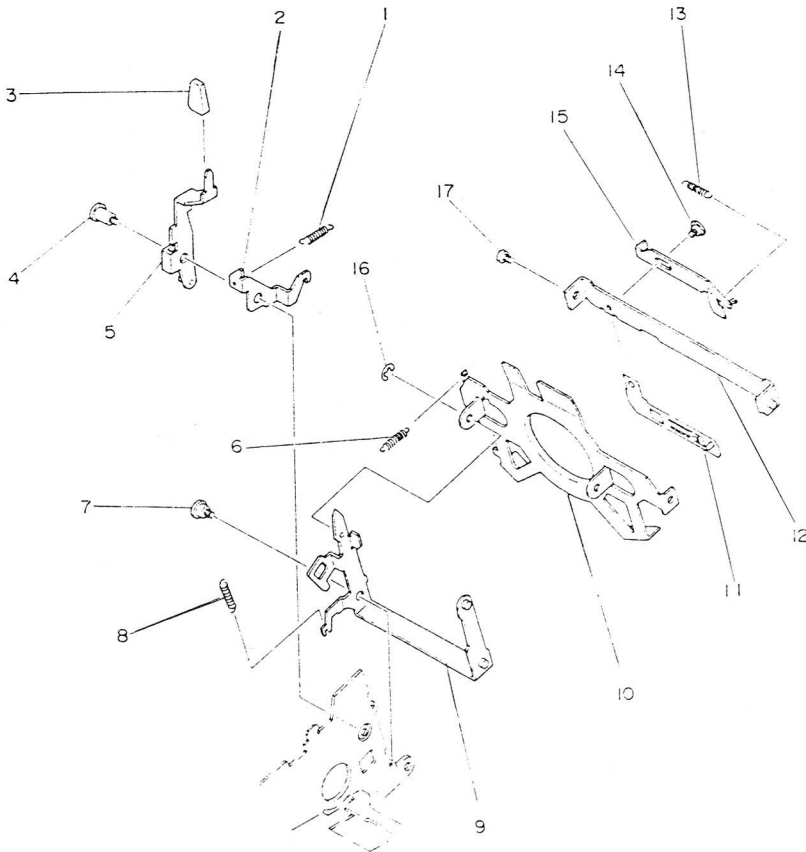
RIBBON DRIVE PARTS LIST

Ref.	Description	Part No.
1	Feed Stem Plate	178145
2	Feed Stem Spring	178146
3	Spring Pin	178147
4	Ribbon Feed Stem	178148
5	E Ring E-2.5	
6	Carrier Reset Crank	178149
7	Spring	178150
8	Spring	178151
9	Reset Crank Lever	178152
10	Screw M2 x 8	
11	Leaf Switch Assembly	177127
12	Ribbon Motor Assembly	177106
13, 19	Screw M3 x 4	
14	Ribbon Feed Ratchet	178153
15	Spring	178154
16	Ribbon Feed Pawl	178155
17	Ribbon Feed Gear	178156
18	E Ring E-3	
20	Ribbon Gear Cover	178157
21	Feed Idle Gear	178158
22	Ribbon Drive Base	178159
23	Ribbon Feed System Complete	
24	Ribbon Main Gear Complete	
25	Ribbon Drive Base Complete	177107

RIBBON DRIVE EXPLODED VIEW



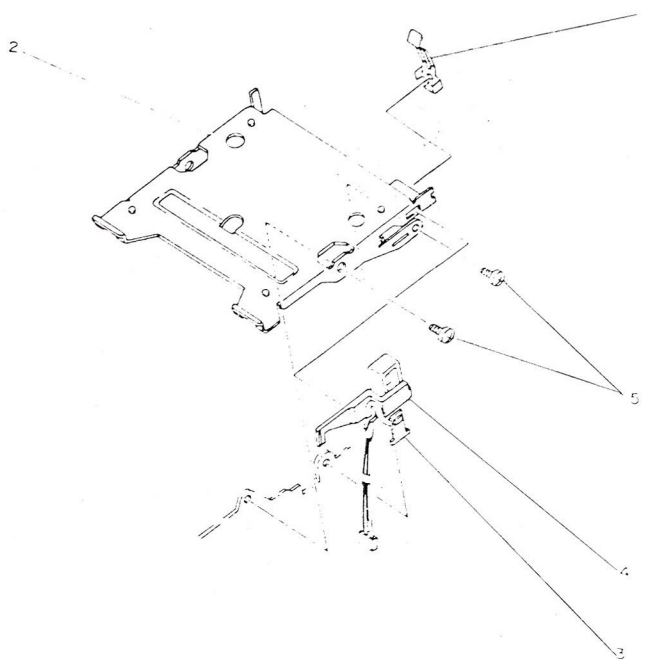
WHEEL SET RELEASE EXPLODED VIEW



WHEEL SET/RELEASE PARTS LIST

Ref.	Description	Part No.
1	Spring	178130
2	Guard Lock Plate	178131
3	Lever Cap	178132
4	Set Lever Screw	178133
5	Wheel Set Lever	178134
6	Spring	178135
7	Set Arm Screw	178136
8	Spring	178137
9	Wheel Set Arm	178138
10	Main Wheel Guard	178139
11	Wheel Reset Spring	178140
12	Sub Wheel Guard	178141
13	Spring	178142
14	Reset Plate Screw	178143
15	Wheel Reset Plate	178144
16	E Ring E-3	
17	Screw M3 x 3	
18	Wheel Set Assembly	177105

RIBBON CASSETTE BASE EXPLODED VIEW



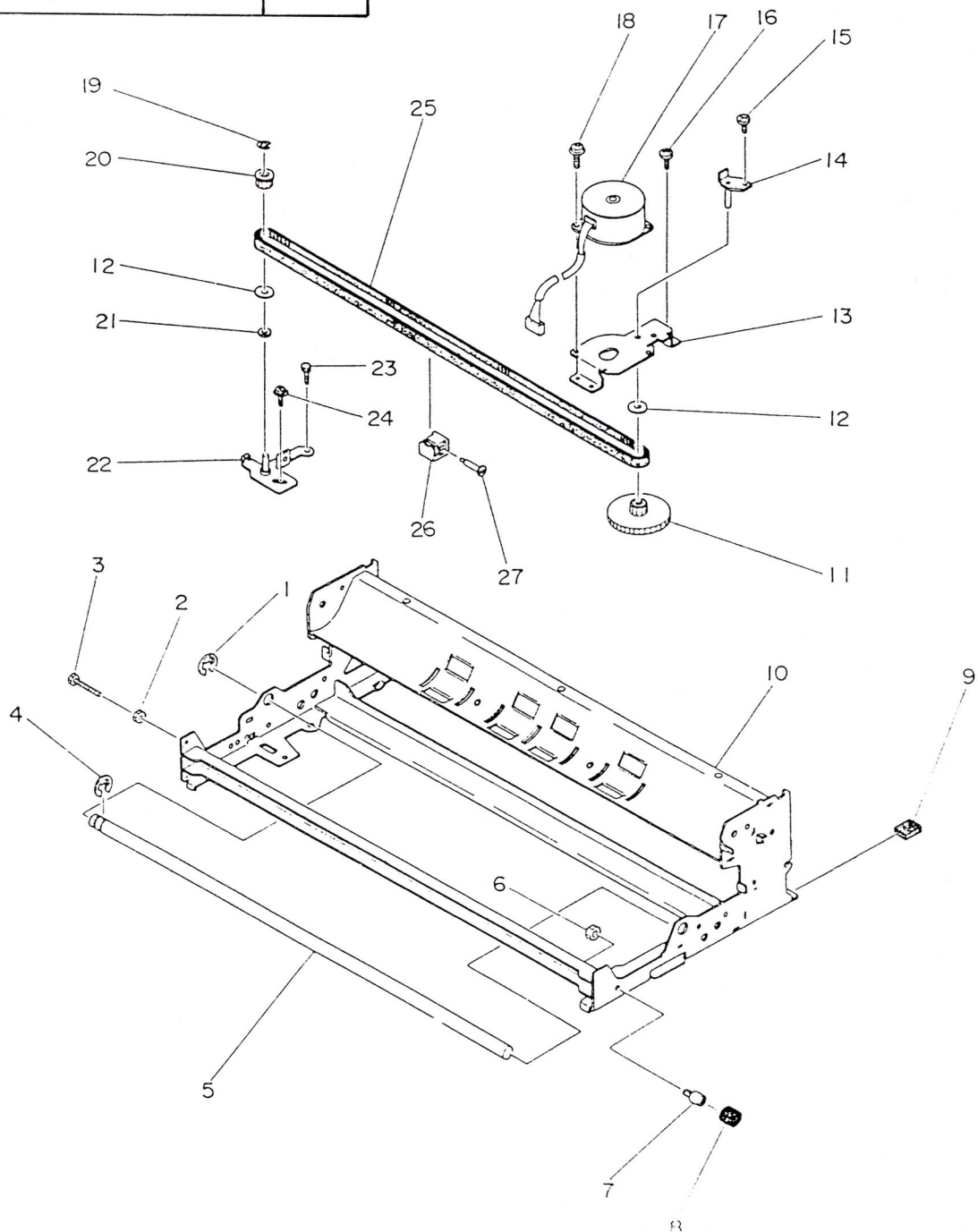
RIBBON CASSETTE BASE PARTS LIST

Ref.	Description	Part No.
1	Cassette Holder Spring	178160
2	Ribbon Cassette Base	178161
3	Ribbon End Sensor Assembly	177128
4	Ribbon End Bracket	176162
5	Screw	
6	Ribbon Cassette Base Assembly	177108

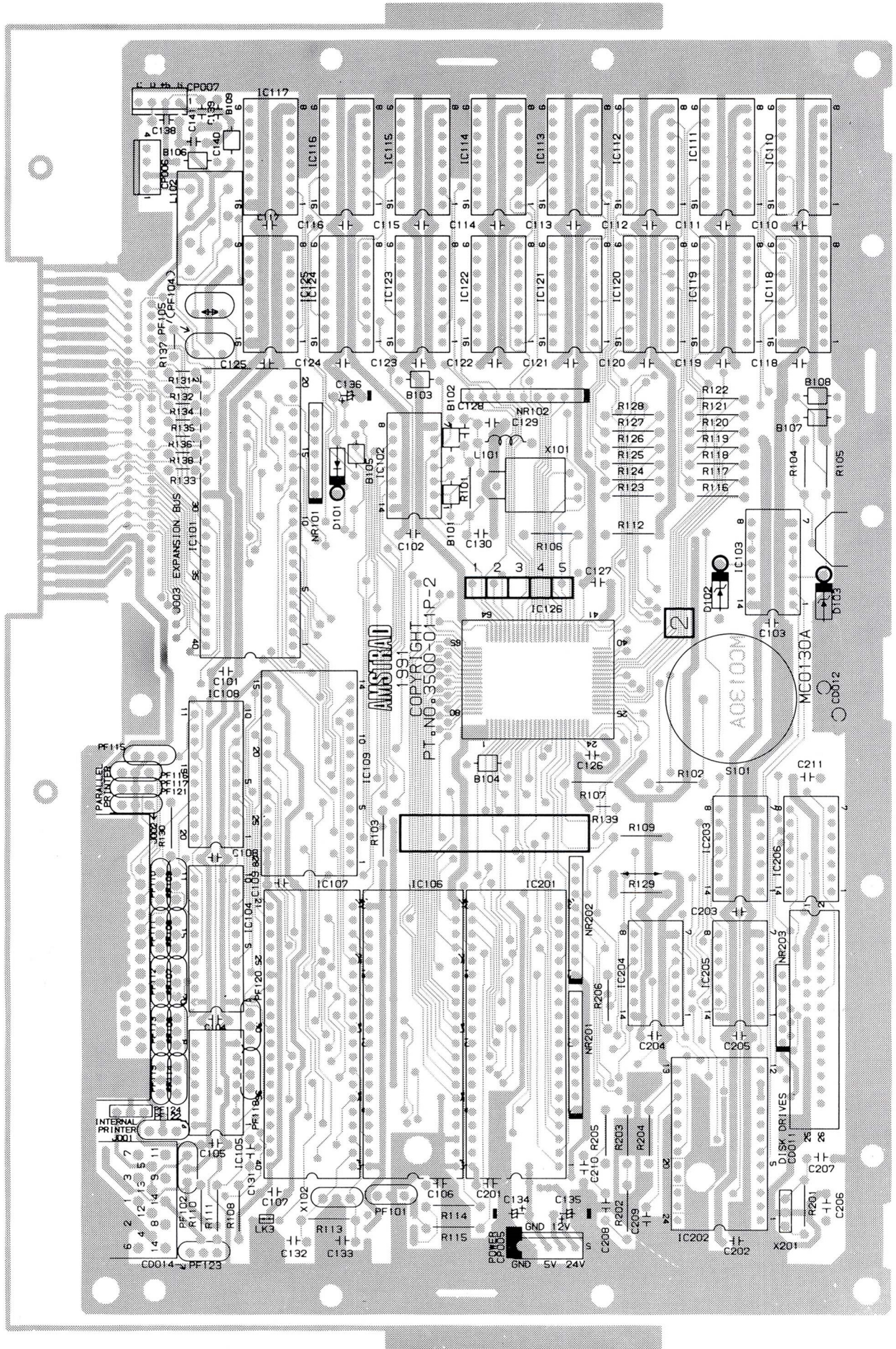
CHASSIS & CARRIAGE DRIVE PARTS LIST

Ref.	Description	Part No.
1, 4	E Ring E-7	177081
2	Nut M3	177082
3	Hex Head Screw	178163
5	Main Rail Shaft	177083
6	Nut M4	177084
7	Frame Side Boss	178164
8	Frame Side Rubber	178165
9	Frame Set Rubber	178166
10	Chassis Complete	177085
11	Carrier Drive Pulley	178167
12	Idle Pulley Flange	178168
13	Carrier Drive Base	178169
14	Drive Shaft Bracket	178170
17	Carrier Motor Assembly	177086
19	E Ring E-3	
20	Idle Pulley	178171
21	Idle Pulley Spacer	178172
22	Idle Pulley Bracket	178173
23	Hexagon Head Screw M4 x 6	
24	Hexagon Head Screw M4 x 8	
25	Drive Belt	178174
26	Belt Holder	178175
27	Belt Holder Screw	178176
28	Drive Belt Complete	177087

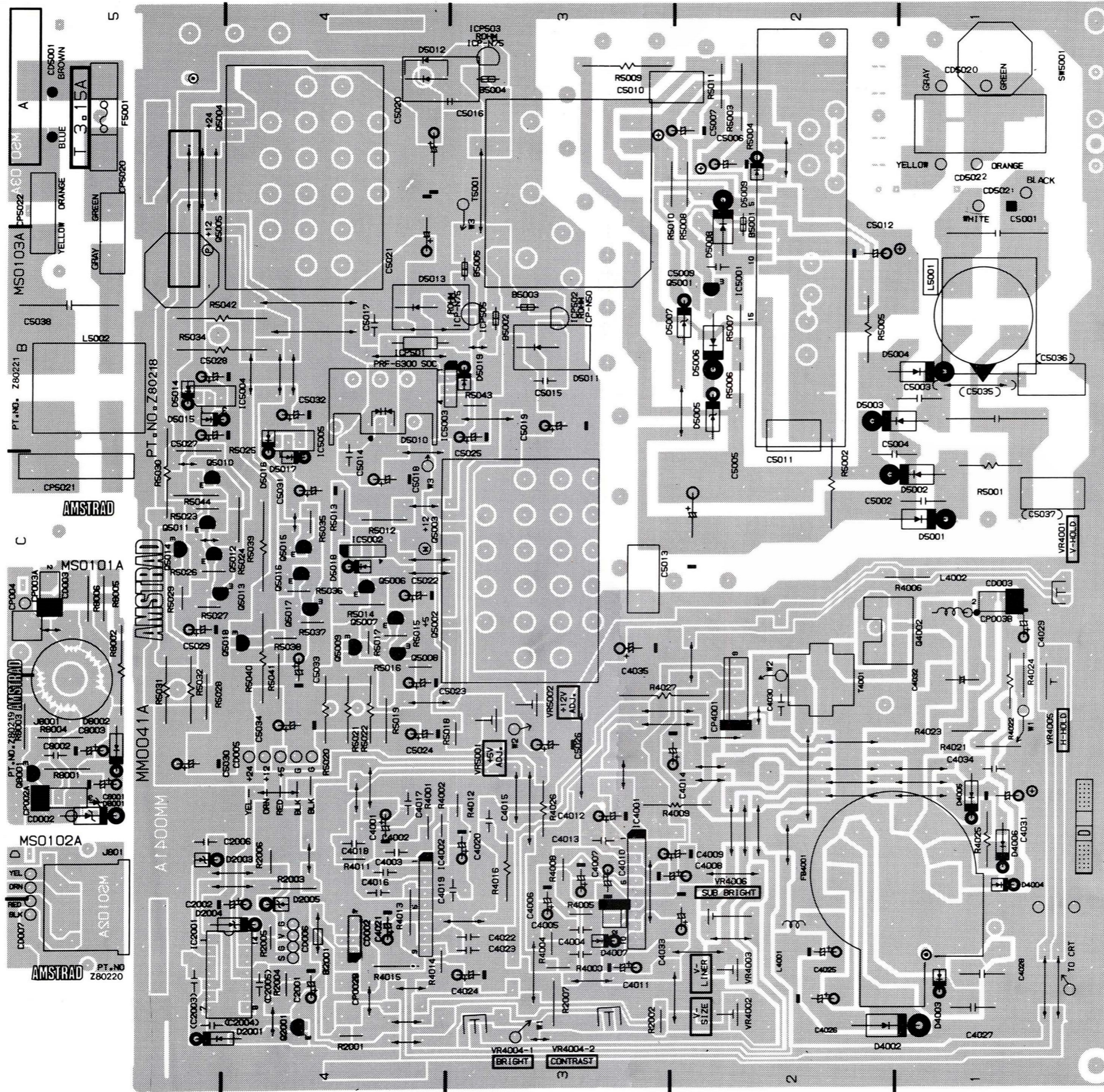
CHASSIS & CARRIAGE DRIVE EXPLODED VIEW



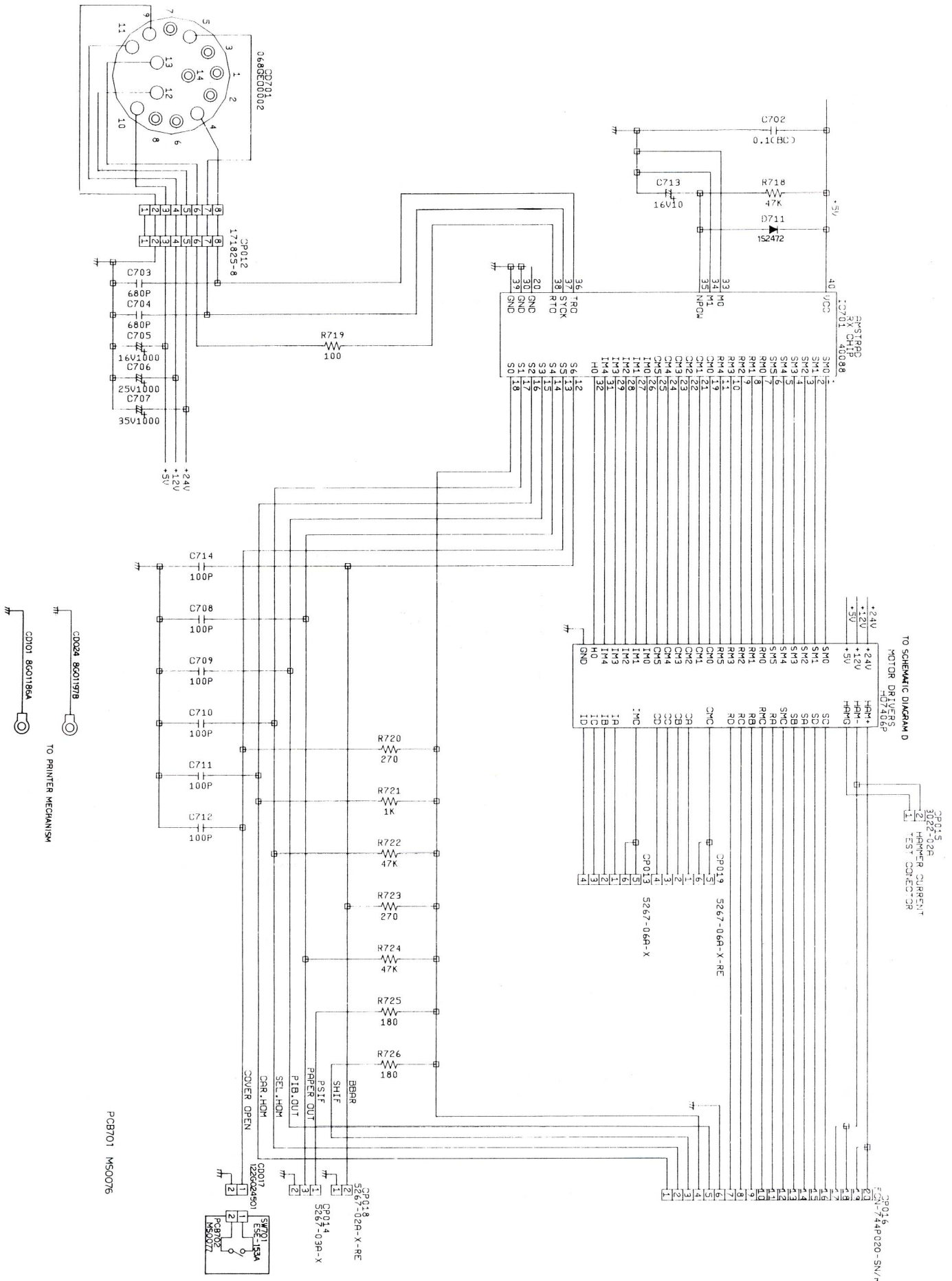
MAIN P.C.B. (Bottom View)



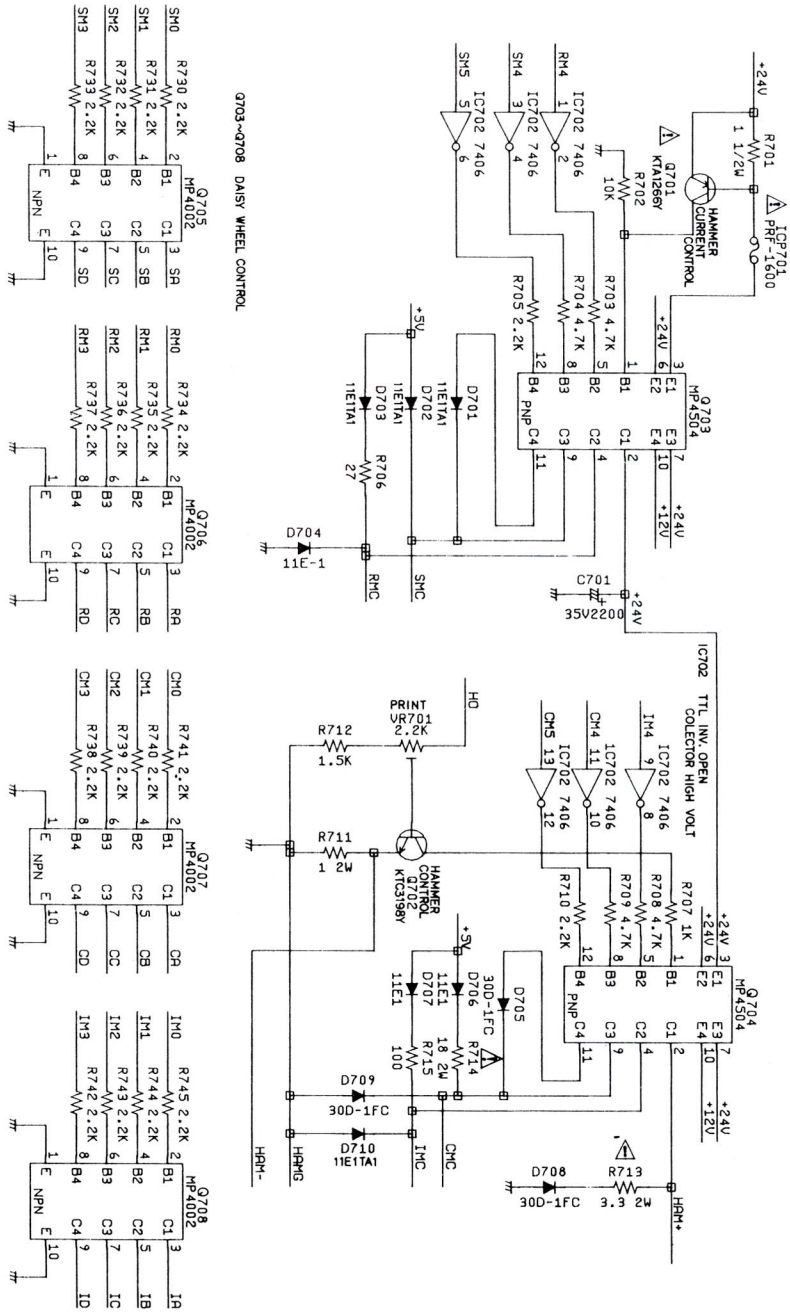
MONITOR/CRT P.C.B.



PRINTER CONTROL SCHEMATIC DIAGRAM



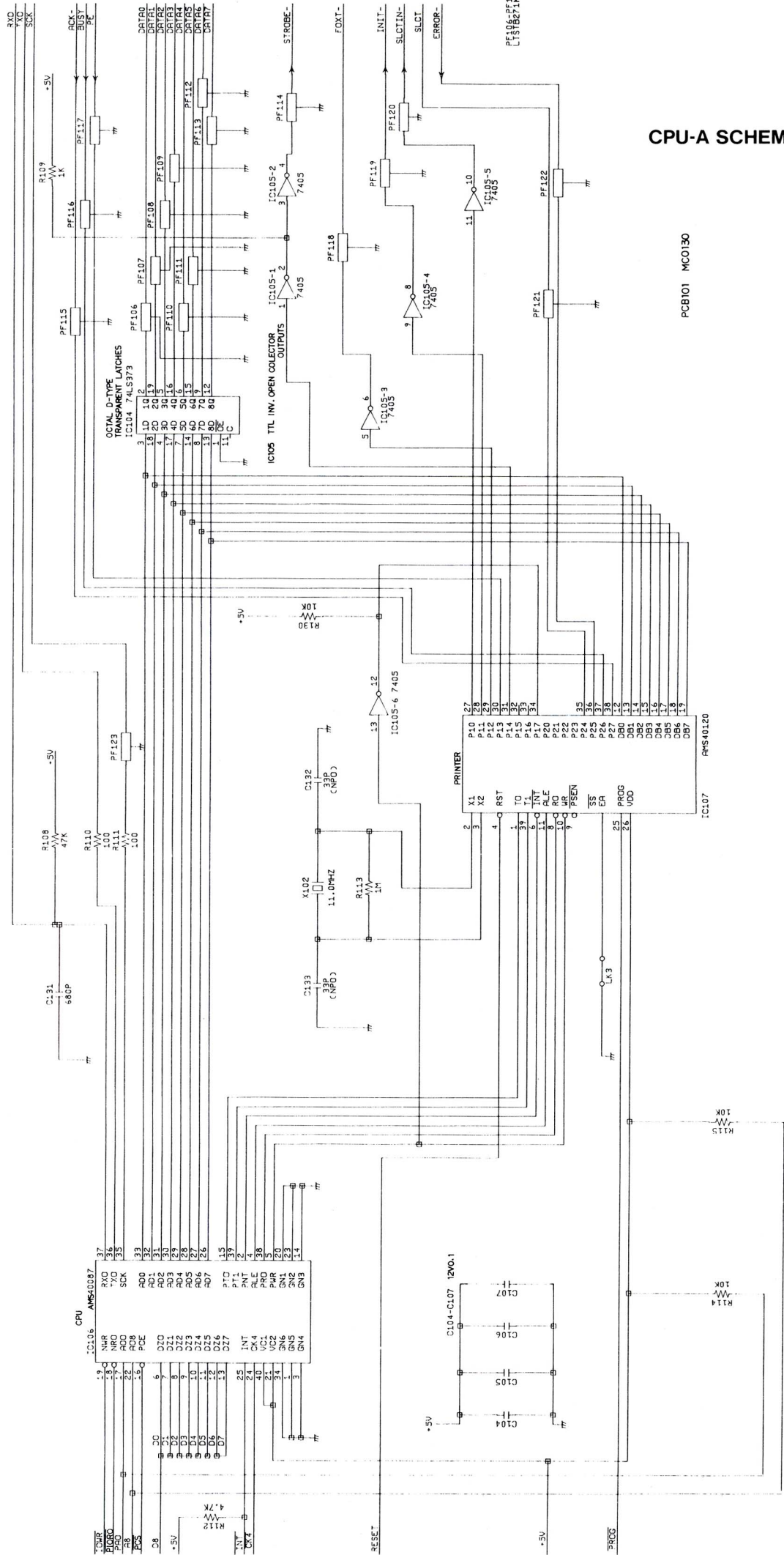
PRINTER MOTOR DRIVER SCHEMATIC DIAGRAM



O703-Q708 DAISSY WHEEL CONTROL

CAUTION: SINCE THESE PARTS MARKED BY ARE CRITICAL FOR SAFETY, USE ONE DESCRIBED ON PARTS LIST ONLY.

NOTE: THIS SCHEMATIC DIAGRAM IS THE LATEST AT THE TIME OF PRINTING AND SUBJECT TO CHANGE WITHOUT NOTICE.

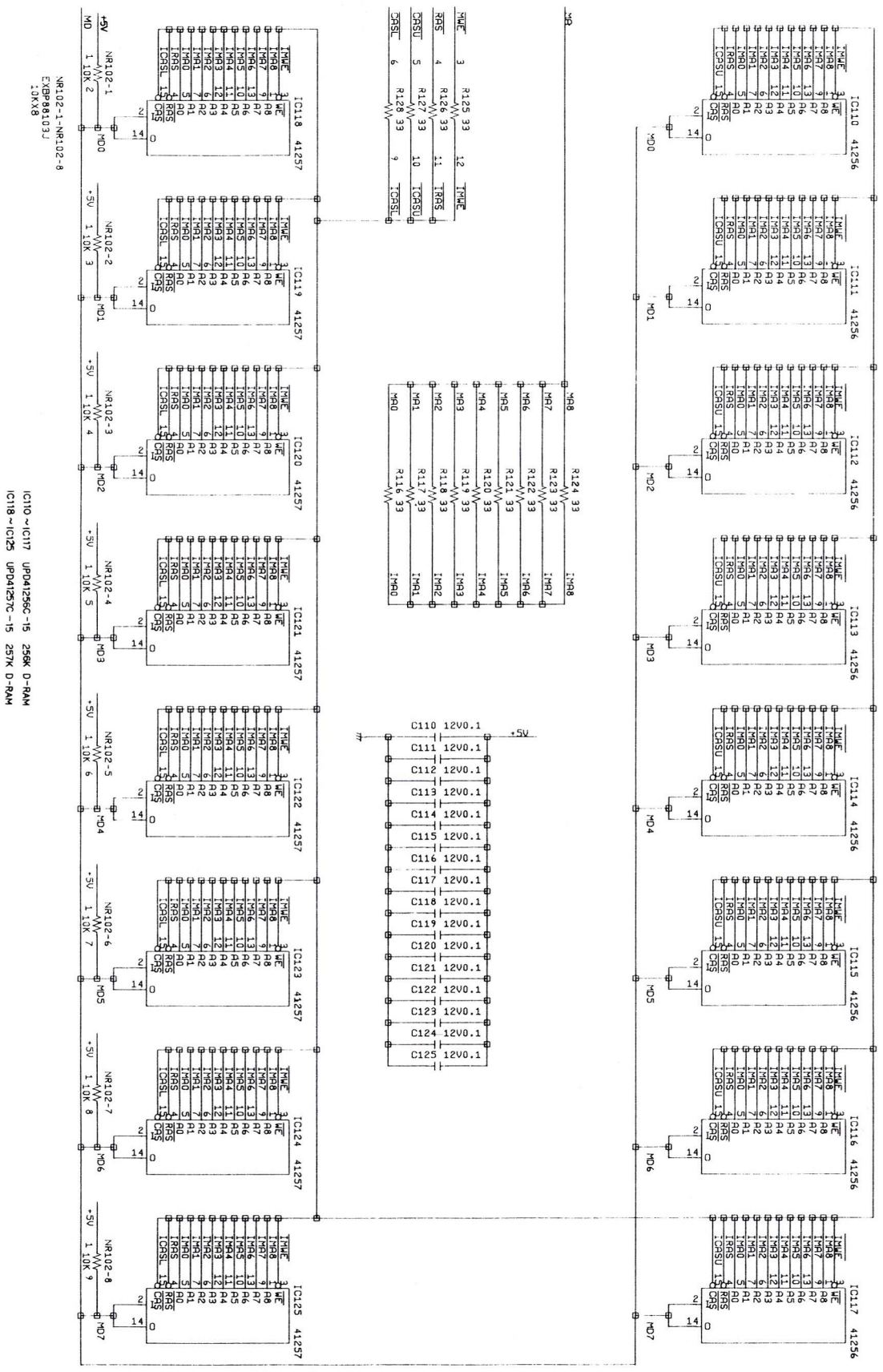


CPU-A SCHEMATIC DIAGRAM

PCB101 MCO130

NOTE: THIS SCHEMATIC DIAGRAM IS THE LATEST AT THE TIME OF PRINTING AND SUBJECT TO CHANGE WITHOUT NOTICE.

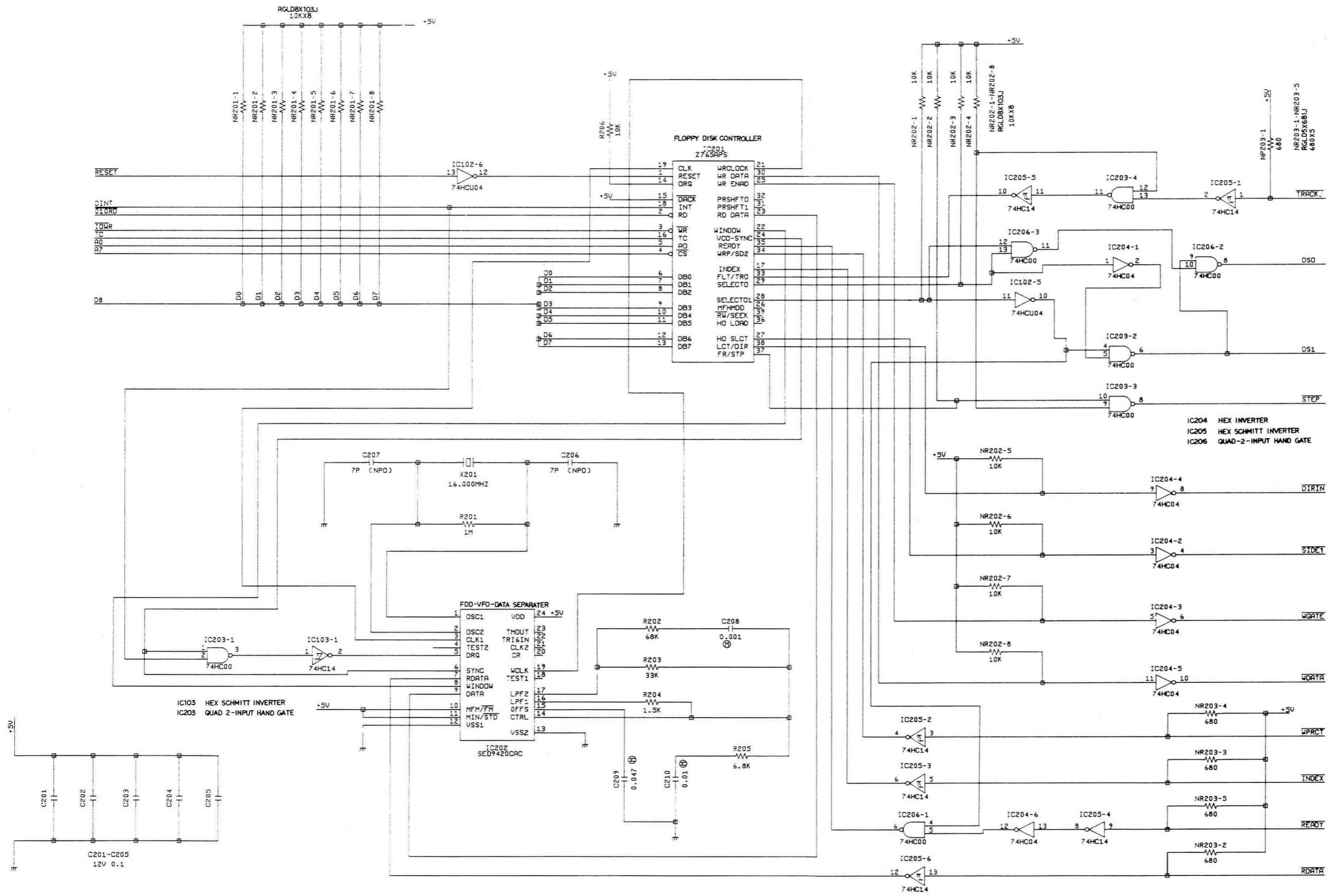
CPU-B SCHEMATIC DIAGRAM



NOTE: THIS SCHEMATIC DIAGRAM IS THE LATEST AT THE TIME OF PRINTING AND SUBJECT TO CHANGE WITHOUT NOTICE.

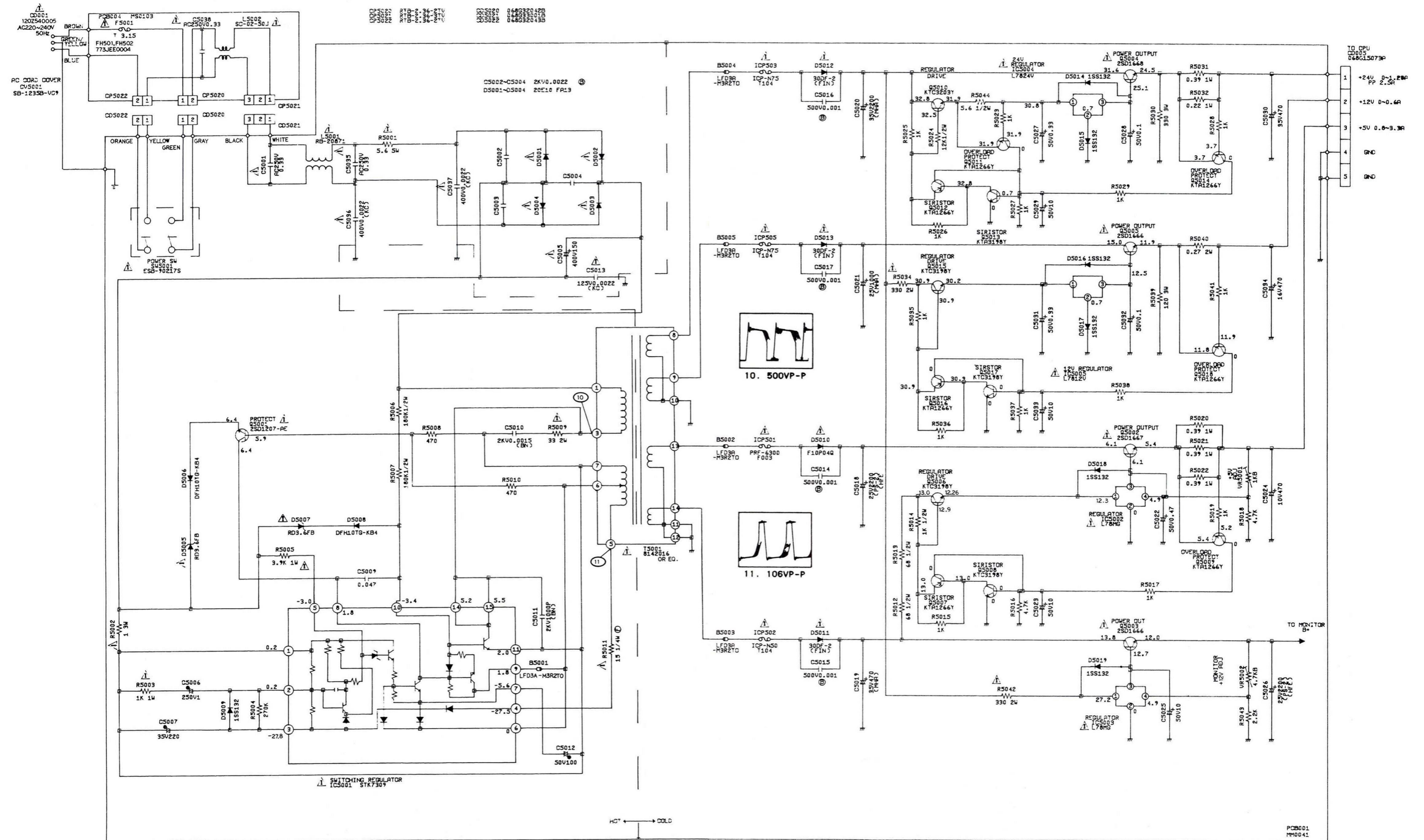
PCB101 MCO130

SCHEMATIC DIAGRAM C



PCB101
MC0130

MONITOR 1 SCHEMATIC DIAGRAM



CAUTION: SINCE THESE PARTS MARKED BY Δ ARE CRITICAL FOR SAFETY, USE ONES DESCRIBED ON PARTS LIST ONLY.

NOTE: THIS SCHEMATIC DIAGRAM IS THE LATEST AT TIME OF PRINTING AND SUBJECT TO CHANGE WITHOUT NOTICE.

Ref. No.	Description	Part No.
ICS		
IC501	IC X8400APS	40080
IC102	IC MC74HCU04N	40008/A
IC103	IC MC74HC14AN	171033
IC104	IC SN74LS373N	170108
IC105	IC HD7405P	177032
IC106	IC AMS40087	40087
IC107	IC AMS40120	40120
IC110-117	IC UPD41256C-15	171400
IC118-125	IC UPD41257C-15	171032
IC126	IC AMS40028	171031
IC201	IC Z765APS	40018
IC202	IC SED9420CAC	171034
IC203, 206	IC MC74HC00AN	171035
IC204	IC MC74HC04AN	171037
IC205	IC MC74HC14AN	171033
IC701	IC AMS40088	40088
IC702	IC HD7406P	177036
IC801	IC AMS40027	171043
IC2001	IC MC74HC00AN	171035
IC4001	IC LA1385	△ 171039
IC4002	IC AN5753	△ 177040
IC5001	IC STK7309	△ 177041
IC5002, 5003	IC L78MG-SE	△ 177042
IC5004	IC L7842V-SA	△ 177043
IC5005	IC L7812V-SA	△ 177044
Transistors		
Q701, 5007, 5009 5011, 5012, 5014, 5016, 5018	SILICON KTA1266Y-AT	△ 272776
Q702, 5006, 5008, 5013, 5015, 5017	SILICON KTC3198Y-AT	272775
Q703, 704	ARRAY MP4504	177037
Q705-708	ARRAY MP4002	177038
Q2001	SILICON KTA1271Y-AT	272897
Q4002	SILICON 2SD1159	△ 171044
Q5001	SILICON 2SD1207-AE	△ 170451
Q5002	SILICON 2SD1667 (R, S)	△ 177045
Q5003, 5005	SILICON 2SD1666 (R, S)	△ 171045
Q5004	SILICON 2SD1668 (R, S)	△ 177046
Q5010	SILICON KTC3203Y-AT	272898
Q8001	SILICON KTC2229Y-AT	171046
Diodes		
D101, 711, 801, 2001	SILICON 1S2472T-77	170455
D102, 103	DZ GZA4.7Y BT-T	1422111
D701-704, 706, 707, 710, 4006, 8002	SILICON 11E1TA1	171050
D705, 708, 709	RECT 30D-1 FC	170625
D2003	DZ MTZ5.1BT-77	171498
D2004, 2005	DZ MTZ5.6BT-77	171499
D4002	SILICON 15DF6-FC	177048
D4003, 4004	RECT 10ELS4-TA-1	171550
D4005	SILICON 11E2TA1	171049
D4007, 5009, 5014-5019	SILICON 1SS132T-77	△ 171489
D4008	SILICON 1SS132T	171489
D5001-5004	SILICON 20E10FA13	△ 171048
D5005, 5007	DZ RD3.6FB	△ 171458
D5006, 5008	RECT DFH10TG-KB4	171492
D5010	SHOTTKY F10P04Q-C	△ 171497
D5011-5013	SILICON 30DF2-FIN	△ 171052
D8001	DZ MA2560	171054

Ref. No.	Description	Part No.
Coils		
L101	Coil, Inductor 2.2μH	177049
L102	Coil, Noise Filtered-08C2-A	
L801	Coil 47μH	177050
L4001	Coil, Inductor 100μH 1451MM	1400148
L4002	Coil, Linearity 21000006	170631
L5001	Coil, Line Filter RB-20871	△ 272899
L5002	Coil, Line Filter SC-02-05J	△ 272900
T4001	Trans, Horizontal Drive RB-20852	170633
T5001	Tran, Switching 8142016	△ 177052
B101, 103, 105-109	Core, Beads B-10	
B102, 104	Core, Beads B-8	
B2001	Core, Beads B-9	
B5001-5005	Core, Beads LFD3A-M3R2TO	
CD001	Cord, AC 120Z540005	△ 272901
CD002	Cord, Connector 8314115B	
CD003	Cord, Jumper 1227022602	
CD005	Cord, Connector 8G15073A	
CD006	Cord, Connector 8314114A	
CD007	Cord, Connector 8G14116B	
CD008	Cord, DIN 8AE75005 Kbd	177004
CD011	Cord, Connector 8GR02605	
CD012	Cord, Connector 8G01198A	
CD014	Cord, Connector 8G01194A	
CD016, 018, 025	Cord, Connector 8G01191A	
CD017	Cord, Jumper 122G0245501	
CD019	Cord, Connector 8G01193A	
CD022	Cord, Connector 8G01195A	
CD024	Cord, Connector 8G01197B	
CD026	Braided Wire 127A140010	
CD101	Cord, EIS Connector 068G01186A	
CD701	Cord, Connector 8GED0002 PTR	177011
CP004	Connector, Pin Center RT-01N-2.4A	
CP005	Connector, PCB Side 171826-5	
CP006	Connector, PCB Side 4-171825-4	
CP007	Connector, PCB Side 2-171825-4	
CP008	Connector, PCB Side 171826-4	
CP012	Connector, PCB Side 171825-8	
CP013	Connector, PCB Side 5267-06A-X	
CP014	Connector, PCB Side 5267-03A-X	
Cp015	Connector, PCB Side 3022-02A	
CP016	Connector, PCB Side FCN-744P020-SN	
CP018	Connector, PCB Side 5267-02A-X-RE	
CP019	Connector, PCB Side 5267-06A-X-RE	
CP020	Connector, PCB Side HBLB10S-5J	
CP021	Connector, PCB Side HBLB11S-5J	
CD5020	Cord, Connector 8G32042B	
CD5021	Cord, Connector 8G33001B	
CD5022	Cord, Connector 8G32043B	
CP003A, 003B	Wire, Holder WH2D-1	
CP4001	Connector, PCB Side 171825-6	
CP4002	Connector, PCB Side 3022-02A	
CP5020-5022	Connector, PCB Side RTB-2.36-2TV	
CV5001	Cover, AC Cord SB-1235B-U09	272902
DY4001	DY 0271011403	△ 177053
FH501, 502	Holder, Fuse 773JEE004	
F5001	Fuse, BET3.15A(T) 250V	△ 171621
FB4001	Transformer Flyback 2014001	△ 177054

Ref. No.	Description	Part No.
Miscellaneous		
FDD101	Floppy Disk Drive U0DC-45A	272508
ICP501	IC Protector PRF-6300-FDD3	△ 177059
ICP502	IC Protector ICP-N50T104	△ 171047
ICP503, 505	IC Protector ICP-N75T104	△ 171057
ICP701	IC Protector PRF-1600-FDD4	△ 177060
JP001	Jumper IN PCB 1230015001	
JP002, 003	Jumper IN PCB 1230005001	
NR101	R. Network RGLD6X-103J	272809
NR102, 201, 202	R. Network RGLD8X103J	270250
NR203	R. Network RGLD5X681J	177062
NR801	R. Network RGLD8X223J	177063
PF101, 102, 106-124	Filter, EMI LTSTB271KB	272813
	User Instructions	272669
	Locoscript Software	272821
	CPM/Plus Software	272822
	Locoscript Software Bubble	272826
	CPM/Plus Software Bubble	272912
PF105	Filter, EMI DSS310-54B271M	272812
PRT701	Printer Mechanism AP620/017-032	177012
PRT702	Ribbon Cassette 620-75006	177161
PRT703	Tractor 620-83005	177018
PRT704	Daisy D43-017032N	
S101	Buzzer, PIEZOELECTRI KBS-20DB-4P	177064
V8001	Tube Cathode Ray MN1416H22AU	△ 272637
X101	Crystal HC-49/U 32.00MHZ	171063
X102	Ceramic, Oscillator BR-11.0M	171064
X201	Ceramic, Oscillator CSA16.00MX7	171231
X801	Ceramic, Oscillator KBR-5.0M	171232
J001	Jack DIN TCS9375-01-0401	177055
J002	Socket, D-SUB M59-25-35-255SS1	270010
J801	Jack Din TCS5040-14-4051	177056
J8001	Socket, CRT ICS-B103	171022
Switches		
SW701	Switch, Push ESE-153A	177031
SW801	Switch, Keyboard ESU-24100	177002
SW5001	Switch, Push ESB-90217S	△ 177058
PCB Assemblies		
PCB001	PCB Assy MM0041-C	272726
PCB002	PCB Assy MS0101	272904
PCB003	PCB Assy MS0102	272905
PCB004	PCB Assy MS0103	272906
PCB101	PCB Assy MC0130	272725
PCB701	PCB Assy MS0076	272907
PCB702	PCB Assy MS0077	272908
PCB801	PCB Assy MK0004	272909
Variable Resistors		
VR701	VR, SF TM8K H1-1SB2.2K	177109
VR4001	VR, ROTARY RK09K1110A49A	171024
VR4002	VR, SF RH615CJ4J0D	177110
VR4003	VR, SF RH061CJ3J09	177111
VR4004	VR, ROTARY RK09Z221000D	272903
VR4005	VR, SF EVLV0AA00B52	171108
VR4006	VR, SF EVN-K4AA00BB55	171113
VR5001	VR, SF RH0624C13J08	177114
VR5002	VR, SF RH0624CS3J0A	177115

Ref. No.	Description	Part No.
Carbon Resistors (All ¼ W unless otherwise stated)		
33Ω	R16-128	10019
82Ω	R106	10031
100Ω	R110, 111, 715, 719	10032
180Ω	R725, 726	10038
270Ω	R720, 723	10042
330Ω	R8004	10044
470Ω	R805-808, 5008, 5010	10048
560Ω	R102	10050
680Ω	R107, 2007	10052
1kΩ	R109, 707, 721, 2003, 5019, 5025, 5028, 5041, 8005	10061
1.5kΩ	R204, 712, 8003	10065
2.2kΩ	R103, 705, 710	10069
4.7kΩ	R112, 703, 704, 708, 709, 803, 804	10077
6.8kΩ	R205	10081
10kΩ	R114, 115, 130, 206, 702, 801, 802, 809	10085
27kΩ	R4013	10095
33kΩ	R203, 8006	10097
39kΩ	R4006	10099
47kΩ	R108, 718, 722, 724	10101
68kΩ	R202	10105
100kΩ	R104, 105	10109
1MΩ	R101, 113, 201, 810, 4024	10147
10MΩ	R4023	171065
Carbon Resistors 1/6W		
30Ω	R4402	240207
270Ω	R131-138	152171
1KΩ	R2001, 5015, 5017, 5023, 5026, 5027, 5029, 5035-5038, 5043	152179
2.2KΩ	R139, 730-745, 4011, 4014, 5043	152183
2.7KΩ	R2004, 4005	152184
3.3KΩ	R2002, 4012	152185
3.9KΩ	R4003, 4004	152187
4.7KΩ	R5016, 5018	152188
5.6KΩ	R2005, 2006	152189
12KΩ	R4001	152195
18KΩ	R4008	152197
270KΩ	R5004	152214
Carbon Resistors ½ W		
5.6Ω	R5044	177130
27Ω	R706	177131
68Ω	R5012, 5013	171067
1KΩ	R5014	1400165
3.3KΩ	R8001	176284
56KΩ	R4021	176539
180KΩ	R5006, 5007	171068
Metal Oxide 2W		
0.27Ω	R5040	171071
1Ω	R711	177135
3.3Ω	R713	△ 177137
33Ω	R5009	△ 171074
330Ω	R5034, 5042	△ 171075
560Ω	R4027	177140
4.7KΩ	R8002	171076
Metal Oxide 3W		
1Ω	R5002	171077
120Ω	R5039	177138
330Ω	R5030	177139
Metal Oxide 1W		
0.22Ω	R5032	171585
0.39Ω	R5020-5022, 5031	177134
1Ω	R4009	△ 171069
100Ω	R4016	△ 171589
1KΩ	R5003	171070
3.9KΩ	R5005	170407

Ref.	Description	Part No.
Fuse Resistors		
1Ω/½W	R4025, 4026	△ 171639
15Ω/¼W	R5011	171078
22Ω/½W	R4022	171079
39Ω/¼W	R4015	171080
Cement Resistor		
5.6Ω/5W	R5001	1422138
Ceramic Capacitors		
7pF/50V	C206, 207	177141
10pF/50V	C130, 138, 139	177142
12pF/50V	C4018	809251
22pF/50V	C129	177143
33pF/50V	C132, 133, 801, 802	150489
62pF/50V	C8002	177145
100pF/50V	C708-712, 714, 4003	1422144
270pF/50V	C2003-2005	176345
680pF/50V	C131, 703, 704	806223
2200pF/AC400V	C5013, 5036, 5037	△ 171081
0.001μF/2kV	C5011	1422147
0.001μF/500V	C5014-5017	171082
0.01μF/50V	C128	1400218
0.1μF/12V	C101-107, 110-127, 201-205, 211, 702, 804, 2006	1400215
0.0015μF/2kV	C5010	171083
0.0022μF/2kV	C5002-5004	1400223
0.022μF/50V	C140, 141	240982
0.047μF/50V	C5009	24015

Amstrad reserves the right to supply selective resistors and capacitors only.

Ref. No.	Description	Part No.
Electrolytic Capacitors		
0.47μF/50V	C4001, 5022	150909
0.33μF/50V	C5027, 5031	171086
1.0μF/160V	C4029	1422151
1μF/50V	C803, 5028, 5032	20062
1μF/250V	C5006	1400152
4.7μF/50V	C4006, 4020	1400240
10μF/16V	C135, 713, 4010, 4024	20024
10μF/25V	C4032	20037
10μF/50V	C2001, 5023, 5025, 5029, 5033	1400242
22μF/16V	C4008	20025
22μF/63V	C8001, 8003	170609
33μF/10V	C4012	170610
47μF/10V	C134, 136, 805	1400244
47μF/50V	C4031	171088
100μF/16V	C2002	20028
100μF/50V	C5012	171089
150μF/400V	C5005	177147
220μF/10V	C4011	170611
220μF/16V	C4021, 4025, 4033	20029
220μF/35V	C4026, 5007	20055
470μF/10V	C5024	20031
470μF/16V	C4035, 5034	1400248
470μF/35V	C5019, 5030	171091
1000μF/10V	C4014	800372
1000μF/16V	C705	1400158
1000μF/25V	C706, 5021	177148
1000μF/35V	C707	1422159
2200μF/25V	C5018, 5026	177149
2200μF/35V	C701, 5020	1422160
Polyester Capacitors		
0.001μF/50V	C208, 4019	171093
0.01μF/50V	C210	171236
0.1μF/50V	C4015	177155
0.0012μF/50V	C4022	177150
0.015μF/50V	C4016	177152
0.027μF/50V	C4002	177153
0.039μF/50V	C4017	177154
0.0047μF/50V	C4030	177157
0.047μF/50V	C209, 4004, 4005, 4013	170422
Polypropylene Capacitors		
0.0022μF/630V	C4036	177156
0.027μF/630V	C4027	272910
0.0047μF/630V	C4048	272473
Metal Plastic Capacitors		
0.33μF/AC250V	C5001, 5035, 5038	△ 272911
Metal Polyester Capacitors		
0.1μF/250V	C4034	177159
Styrol Capacitors		
470pF/50V	C4023	177158
Tantal Capacitors		
1μF/25V	C4007	171100
10μF/16V	C4009	1422167